



**INTERNATIONAL
GEMOLOGICAL
INSTITUTE**

ELECTRONIC COPY

LABORATORY GROWN DIAMOND REPORT

June 24, 2025
 IGI Report Number **LG715595342**
 Description **LABORATORY GROWN DIAMOND**
 Shape and Cutting Style **HEART MODIFIED BRILLIANT**
 Measurements **6.03 X 6.80 X 3.36 MM**

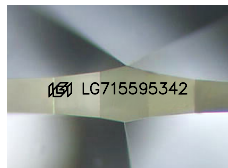
GRADING RESULTS

Carat Weight **0.97 CARAT**
 Color Grade **FANCY VIVID PINK**
 Clarity Grade **VS 2**

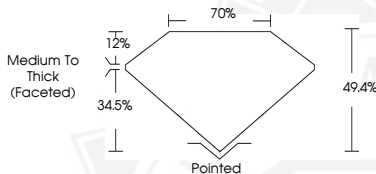
ADDITIONAL GRADING INFORMATION

Polish **EXCELLENT**
 Symmetry **EXCELLENT**
 Fluorescence **STRONG**
 Inscription(s) **IGI LG715595342**

Comments: This Laboratory Grown Diamond was created by Chemical Vapor Deposition (CVD) growth process.



Sample Image Used



June 24, 2025
 IGI Report Number **LG715595342**
HEART MODIFIED BRILLIANT
LABORATORY GROWN DIAMOND
6.03 X 6.80 X 3.36 MM
 Carat Weight **0.97 CARAT**
 Color Grade **FANCY VIVID PINK**
 Clarity Grade **VS 2**
 Polish **EXCELLENT**
 Symmetry **EXCELLENT**
 Fluorescence **STRONG**
 Inscription(s) **IGI LG715595342**

Comments: This Laboratory Grown Diamond was created by Chemical Vapor Deposition (CVD) growth process.



June 24, 2025
 IGI Report Number **LG715595342**
HEART MODIFIED BRILLIANT
LABORATORY GROWN DIAMOND
6.03 X 6.80 X 3.36 MM
 Carat Weight **0.97 CARAT**
 Color Grade **FANCY VIVID PINK**
 Clarity Grade **VS 2**
 Polish **EXCELLENT**
 Symmetry **EXCELLENT**
 Fluorescence **STRONG**
 Inscription(s) **IGI LG715595342**

Comments: This Laboratory Grown Diamond was created by Chemical Vapor Deposition (CVD) growth process.

THIS DOCUMENT WAS PRODUCED WITH THE FOLLOWING SECURITY MEASURES: SPECIAL DOCUMENT PAPER, INK SCREENS, WATERMARK, BACKGROUND DESIGN, HOLOGRAM AND OTHER SECURITY FEATURES NOT LISTED AND DO EXCEED DOCUMENT SECURITY INDUSTRY GUIDELINES.

For terms & conditions and to verify this report, please visit www.igi.org