

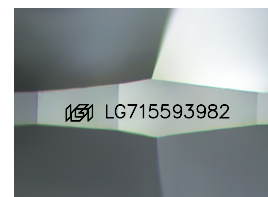
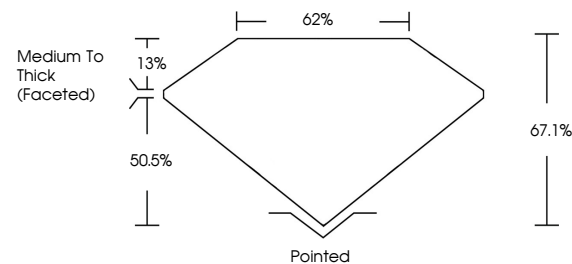


**ELECTRONIC COPY**

## LABORATORY GROWN DIAMOND REPORT

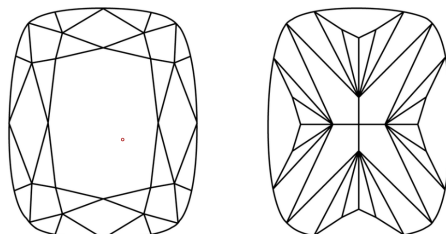
LG715593982  
Report verification at [igi.org](https://igi.org)

## PROPORTIONS



Sample Image Used

## CLARITY CHARACTERISTICS



## KEY TO SYMBOLS

Red symbols indicate internal characteristics.  
Green symbols indicate external characteristics.

## COLOR

D E F G H I J Faint Very Light Light

## CLARITY

IF      VWS<sup>1-2</sup>      VS<sup>1-2</sup>      SI<sup>1-2</sup>      I<sup>1-3</sup>

Internally Flawless	Very Very Slightly Included	Very Slightly Included	Slightly Included	Included
------------------------	--------------------------------	---------------------------	----------------------	----------

## LABORATORY GROWN DIAMOND REPORT



June 19, 2025

IGI Report Number **LG715593982**Description **LABORATORY GROWN DIAMOND**

Shape and Cutting Style **CUSHION MODIFIED  
BRILLIANT**

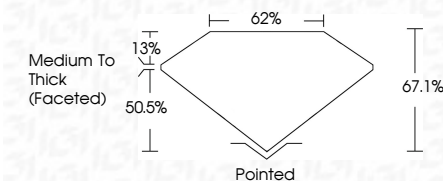
Measurements 12.66 X 9.60 X 6.44 MM

## GRADING RESULTS

Carat Weight **6.19 CARATS**

Color Grade **F**

Clarity Grade VS 1



### ADDITIONAL GRADING INFORMATION

Polish EXCELLENT

Symmetry **EXCELLENT**Fluorescence **NONE**Inscription(s)  LG715593982

Comments: This Laboratory Grown Diamond was created by Chemical Vapor Deposition (CVD) growth process.  
Type IIa



**www.igi.org**

© IGI 2020, International Gemological Institute

FD - 10 20



THIS DOCUMENT WAS PRODUCED WITH THE FOLLOWING SECURITY MEASURES: SPECIAL DOCUMENT PAPER, INK SCREENS, WATERMARK, BACKGROUND DESIGNS, HOLOGRAM AND OTHER SECURITY FEATURES NOT LISTED AND DO EXCEED DOCUMENT SECURITY INDUSTRY GUIDELINES

June 19, 2025  
 CGI Report No LG715593982  
 DISHION MODIFIED BRILLIANT

<b>12.60 X 9.60 X 6.44 MM</b>	<b>6.19 CARATS</b>
Carat Weight	<b>F</b>
Color Grade	<b>VS 1</b>
Clarity Grade	<b>67.1%</b>
Depth	<b>66%</b>
Table	<b>Medium to Thick</b>
Girdle	<b>(faceted)</b>
Culet	<b>Pointed</b>
Polish	<b>EXCELLENT</b>
Symmetry	<b>EXCELLENT</b>
Fluorescence	<b>NONE</b>
Annotations(s)	<b>see 1 (271593892)</b>

**Comments:**  
This Laboratory Grown Diamond was created by Chemical Vapor Deposition (CVD) growth process.