

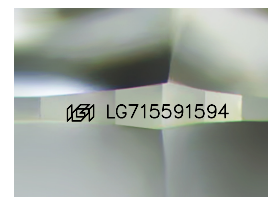
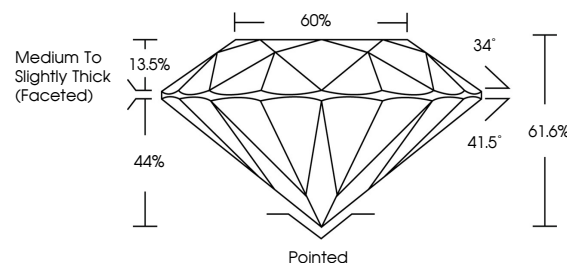


ELECTRONIC COPY

LABORATORY GROWN DIAMOND REPORT

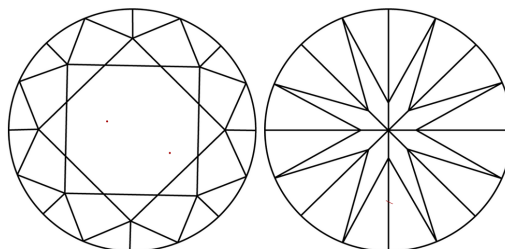
LG715591594
Report verification at igi.org

PROPORTIONS



Sample Image Used

CLARITY CHARACTERISTICS



KEY TO SYMBOLS

Red symbols indicate internal characteristics.
Green symbols indicate external characteristics.

COLOR

D E F G H I J Faint Very Light Light

CLARITY

IF WS¹⁻² VS¹⁻² SI¹⁻² |¹⁻³

Internally Flawless	Very Very Slightly Included	Very Slightly Included	Slightly Included	Included
------------------------	--------------------------------	---------------------------	----------------------	----------



June 16, 2025

IGI Report Number **LG715591594**Description **LABORATORY GROWN DIAMOND**Shape and Cutting Style **ROUND BRILLIANT**

Measurements 6.83 - 6.88 X 4.22 MM

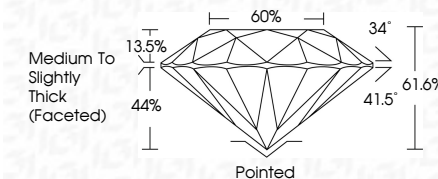
GRADING RESULTS

Carat Weight 1.23 CARAT

Color Grade

Clarity Grade VS 1

Cut Grade **IDEAL**



ADDITIONAL GRADING INFORMATION

Polish **EXCELLENT**Symmetry **EXCELLENT**

Fluorescence NON

Inscription(s) LG715591594

Comments: This Laboratory Grown Diamond was created by Chemical Vapor Deposition (CVD) growth process.

Type IIa



© IGI 2020, International Gemological Institute

FD - 10 20

www.igi.org

THIS DOCUMENT WAS PRODUCED WITH THE FOLLOWING SECURITY MEASURES: SPECIAL DOCUMENT PAPER, INK SCREENS, WATERMARK BACKGROUND DESIGNS, HOLOGRAM AND OTHER SECURITY FEATURES NOT LISTED AND DO EXCEED DOCUMENT SECURITY INDUSTRY GUIDELINES

June 16, 2026	1.23 CARAT
GI Report No. G715591594	VS 1
ROUND BRILLIANT	IDEAL
	61.6%
	60%
	Medium to Slightly Thick (Faceted)
	Pointed
	EXCELLENT
	EXCELLENT
	NONE
	681 G715591594
Comments:	
The Laboratory Crown Diamond was	
found to be a natural Vapor Deposition	
(VD) growth process.	
Type Iia	