



ELECTRONIC COPY

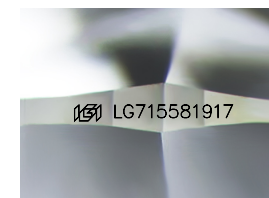
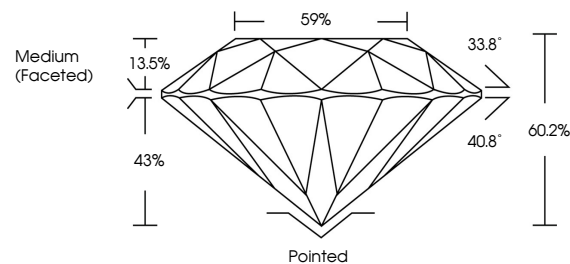
LG715581917
Report verification at igi.org



June 14, 2025
IGI Report Number **LG715581917**
Description **LABORATORY GROWN DIAMOND**
Shape and Cutting Style **ROUND BRILLIANT**
Measurements **6.80 - 6.83 X 4.10 MM**
GRADING RESULTS
Carat Weight **1.16 CARAT**
Color Grade **D**
Clarity Grade **VS 1**
Cut Grade **IDEAL**

June 14, 2025
IGI Report Number **LG715581917**
Description **LABORATORY GROWN DIAMOND**
Shape and Cutting Style **ROUND BRILLIANT**
Measurements **6.80 - 6.83 X 4.10 MM**

PROPORTIONS

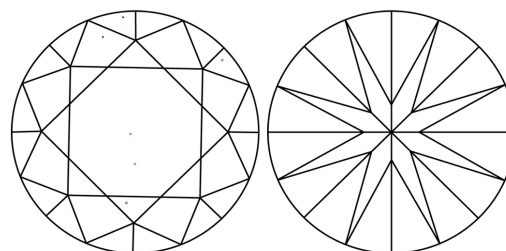


Sample Image Used

GRADING RESULTS

Carat Weight **1.16 CARAT**
Color Grade **D**
Clarity Grade **VS 1**
Cut Grade **IDEAL**

CLARITY CHARACTERISTICS



KEY TO SYMBOLS

Red symbols indicate internal characteristics.
Green symbols indicate external characteristics.

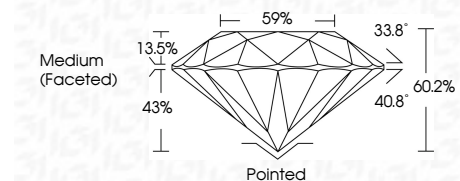


COLOR

D E F G H I J Faint Very Light Light

CLARITY

IF	VS ¹⁻²	VS ¹⁻²	SI ¹⁻²	I ¹⁻³
Internally Flawless	Very Very Slightly Included	Very Slightly Included	Slightly Included	Included



ADDITIONAL GRADING INFORMATION

Polish **EXCELLENT**
Symmetry **EXCELLENT**
Fluorescence **NONE**
Inscription(s) **IGI LG715581917**
Comments: HEARTS & ARROWS
This Laboratory Grown Diamond was created by Chemical Vapor Deposition (CVD) growth process. Type IIa

ADDITIONAL GRADING INFORMATION

Polish **EXCELLENT**
Symmetry **EXCELLENT**
Fluorescence **NONE**
Inscription(s) **IGI LG715581917**

Comments: HEARTS & ARROWS
This Laboratory Grown Diamond was created by Chemical Vapor Deposition (CVD) growth process. Type IIa



June 14, 2025
IGI Report No LG715581917
ROUND BRILLIANT
6.80 - 6.83 X 4.10 MM
1.16 CARAT
D
VS 1
IDEAL
60.2%
59%
Medium (Faceted)
Pointed
EXCELLENT
EXCELLENT
NONE
IGI LG715581917
Comments: HEARTS & ARROWS
This Laboratory Grown Diamond was created by Chemical Vapor Deposition (CVD) growth process. Type IIa