

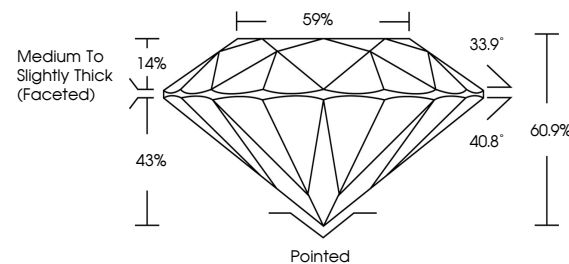


**ELECTRONIC COPY**

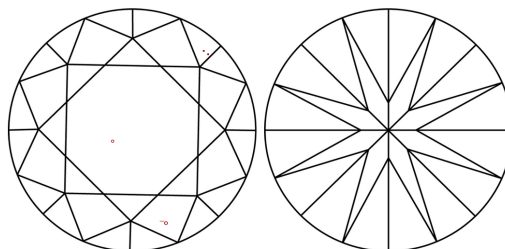
## LABORATORY GROWN DIAMOND REPORT

LG715579310  
Report verification at [igi.org](https://igi.org)

## PROPORTIONS



## CLARITY CHARACTERISTICS



### KEY TO SYMBOLS

Red symbols indicate internal characteristics.  
Green symbols indicate external characteristics.

## COLOR

D E F G H I J Faint Very Light Light

## CLARITY

IF WS<sup>1-2</sup> VS<sup>1-2</sup> SI<sup>1-2</sup> |<sup>1-3</sup>

Internally Flawless	Very Very Slightly Included	Very Slightly Included	Slightly Included	Included
------------------------	--------------------------------	---------------------------	----------------------	----------

## LABORATORY GROWN DIAMOND REPORT



June 16, 2025

IGI Report Number **LG715579310**Description **LABORATORY GROWN DIAMOND**Shape and Cutting Style **ROUND BRILLIANT**

Measurements 8.01 - 8.04 X 4.89 MM

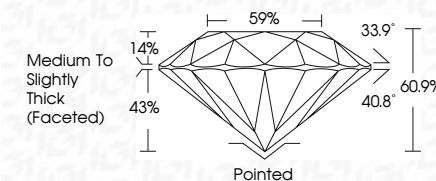
## GRADING RESULTS

Carat Weight **1.94 CARAT**

Color Grade E

Clarity Grade VS 1

Cut Grade **IDEAL**



### ADDITIONAL GRADING INFORMATION

Polish **EXCELLENT**Symmetry **EXCELLENT**Fluorescence **NONE**Inscription(s)  LG715579310

Comments: This Laboratory Grown Diamond was created by Chemical Vapor Deposition (CVD) growth process.  
Type IIa



© IGI 2020, International Gemological Institute

FD - 10 20

**www.igi.org**

THIS DOCUMENT WAS PRODUCED WITH THE FOLLOWING SECURITY MEASURES: SPECIAL DOCUMENT PAPER, INK SCREENS, WATERMARK, BACKGROUND DESIGNS, HOLOGRAM AND OTHER SECURITY FEATURES NOT LISTED AND DO EXCEED DOCUMENT SECURITY INDUSTRY GUIDELINE

June 16, 2025  
 LGI Report No LG715579310  
 BOUND BRILLIANT

ROUND BRILLIANT	1.01 - 0.04 X 4.89 MM	1.94 CARAT
Color	Light	E
Clarity	VS1	IDEAL
Depth	60.9%	59%
Table	Medium to Slightly Thick	Medium to Slightly Thick
Grades	Excellent	Excellent
Cut	Excellent	Excellent
Polish	Excellent	Excellent
Symmetry	Excellent	Excellent
Fluorescence	None	None
Serial Number	641127150210	641127150210

**Comments:**  
This Laboratory Grown Diamond was created by Chemical Vapor Deposition (CVD) growth process.