



ELECTRONIC COPY

LG715579255 Report verification at igi.org



June 14, 2025 IGI Report Number LG715579255 Description LABORATORY GROWN DIAMOND Shape and Cutting Style ROUND BRILLIANT Measurements 6.65 - 6.68 X 4.04 MM GRADING RESULTS Carat Weight 1.09 CARAT Color Grade D Clarity Grade VS 1 Cut Grade IDEAL

June 14, 2025 IGI Report Number LG715579255 Description LABORATORY GROWN DIAMOND Shape and Cutting Style ROUND BRILLIANT Measurements 6.65 - 6.68 X 4.04 MM

GRADING RESULTS

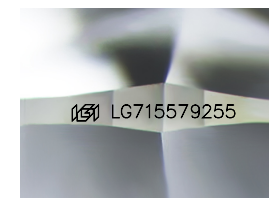
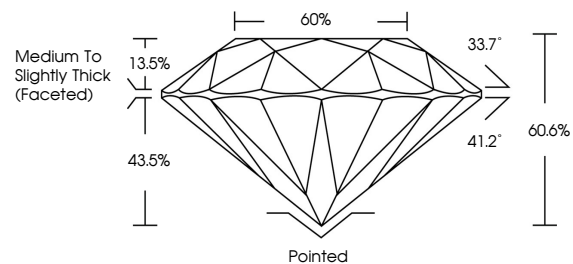
Carat Weight 1.09 CARAT Color Grade D Clarity Grade VS 1 Cut Grade IDEAL

ADDITIONAL GRADING INFORMATION

Polish EXCELLENT Symmetry EXCELLENT Fluorescence NONE Inscription(s) IGI LG715579255

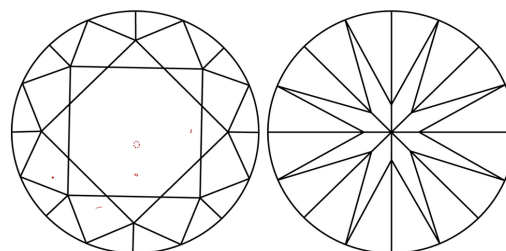
Comments: This Laboratory Grown Diamond was created by Chemical Vapor Deposition (CVD) growth process. Type IIa

PROPORTIONS



Sample Image Used

CLARITY CHARACTERISTICS



KEY TO SYMBOLS

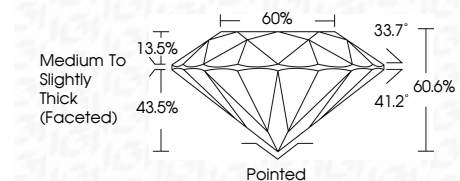
Red symbols indicate internal characteristics. Green symbols indicate external characteristics.

COLOR

D E F G H I J Faint Very Light Light

CLARITY

IF WS 1-2 VS 1-2 SI 1-2 I 1-3 Internally Flawless Very Very Slightly Included Very Slightly Included Slightly Included Included



ADDITIONAL GRADING INFORMATION

Polish EXCELLENT Symmetry EXCELLENT Fluorescence NONE Inscription(s) IGI LG715579255 Comments: This Laboratory Grown Diamond was created by Chemical Vapor Deposition (CVD) growth process. Type IIa



Summary table: June 14, 2025 IGI Report No LG715579255 ROUND BRILLIANT 6.65 - 6.68 X 4.04 MM 1.09 CARAT D VS 1 IDEAL 60.6% Medium To Slightly Thick (Faceted) Pointed EXCELLENT EXCELLENT NONE IGI LG715579255 Comments: This Laboratory Grown Diamond was created by Chemical Vapor Deposition (CVD) growth process. Type IIa