



**ELECTRONIC COPY**

LG715575115  
Report verification at igi.org



June 26, 2025

IGI Report Number **LG715575115**

Description **LABORATORY GROWN DIAMOND**

Shape and Cutting Style **EMERALD CUT**

Measurements **14.91 X 10.57 X 6.87 MM**

**GRADING RESULTS**

Carat Weight **11.00 CARATS**

Color Grade **FANCY INTENSE PINK**

Clarity Grade **VS 2**

June 26, 2025  
IGI Report Number **LG715575115**  
Description **LABORATORY GROWN DIAMOND**  
Shape and Cutting Style **EMERALD CUT**  
Measurements **14.91 X 10.57 X 6.87 MM**

**GRADING RESULTS**

Carat Weight **11.00 CARATS**

Color Grade **FANCY INTENSE PINK**

Clarity Grade **VS 2**

**ADDITIONAL GRADING INFORMATION**

Polish **EXCELLENT**

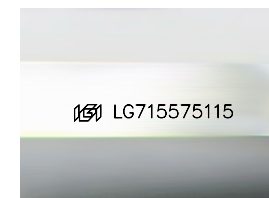
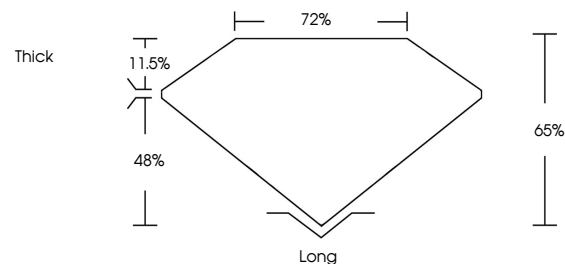
Symmetry **EXCELLENT**

Fluorescence **SLIGHT**

Inscription(s) **IGI LG715575115**

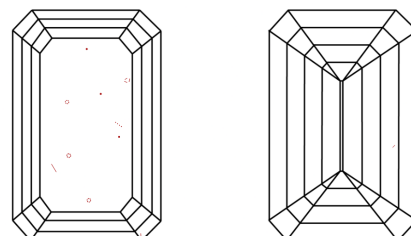
Comments: This Laboratory Grown Diamond was created by Chemical Vapor Deposition (CVD) growth process. Indications of post-growth treatment.

**PROPORTIONS**



Sample Image Used

**CLARITY CHARACTERISTICS**



**KEY TO SYMBOLS**

Red symbols indicate internal characteristics.  
Green symbols indicate external characteristics.

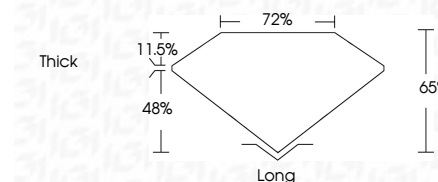
**COLOR**

D E F G H I J Faint Very Light Light

**CLARITY**

IF VS<sup>1-2</sup> VS<sup>1-2</sup> SI<sup>1-2</sup> I<sup>1-3</sup>

Internally Flawless Very Very Slightly Included Very Slightly Included Slightly Included Included



**ADDITIONAL GRADING INFORMATION**

Polish **EXCELLENT**

Symmetry **EXCELLENT**

Fluorescence **SLIGHT**

Inscription(s) **IGI LG715575115**

Comments: This Laboratory Grown Diamond was created by Chemical Vapor Deposition (CVD) growth process. Indications of post-growth treatment.



**IGI**



June 26, 2025  
IGI Report No LG715575115  
**EMERALD CUT**  
14.91 X 10.57 X 6.87 MM  
11.00 CARATS  
FANCY INTENSE PINK  
VS 2  
65%  
72%  
Thick  
Long  
EXCELLENT  
EXCELLENT  
SLIGHT  
IGI LG715575115  
Comments: This Laboratory Grown Diamond was created by Chemical Vapor Deposition (CVD) growth process. Indications of post-growth treatment.