



**ELECTRONIC COPY**

LG715572503  
Report verification at igi.org



July 11, 2025  
IGI Report Number **LG715572503**  
Description **LABORATORY GROWN DIAMOND**  
Shape and Cutting Style **CUSHION MODIFIED BRILLIANT**  
Measurements **9.68 X 7.59 X 5.16 MM**  
**GRADING RESULTS**  
Carat Weight **3.56 CARATS**  
Color Grade **FANCY VIVID PINK**  
Clarity Grade **VS 2**

**LABORATORY GROWN DIAMOND REPORT**

July 11, 2025  
IGI Report Number **LG715572503**  
Description **LABORATORY GROWN DIAMOND**  
Shape and Cutting Style **CUSHION MODIFIED BRILLIANT**  
Measurements **9.68 X 7.59 X 5.16 MM**

**GRADING RESULTS**

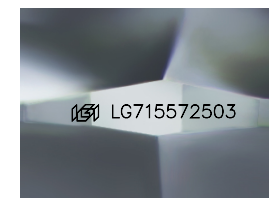
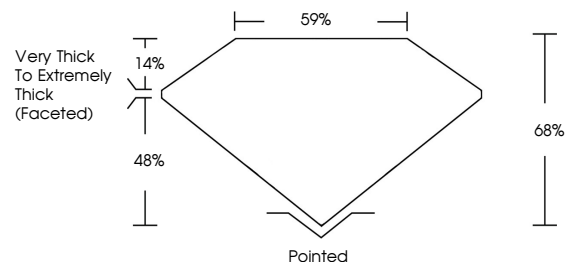
Carat Weight **3.56 CARATS**  
Color Grade **FANCY VIVID PINK**  
Clarity Grade **VS 2**

**ADDITIONAL GRADING INFORMATION**

Polish **EXCELLENT**  
Symmetry **EXCELLENT**  
Fluorescence **STRONG**  
Inscription(s) **IGI LG715572503**

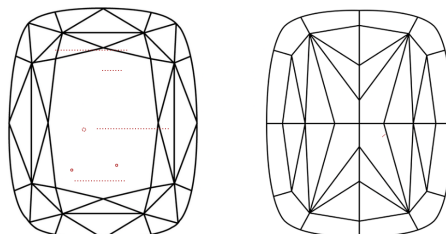
Comments: This Laboratory Grown Diamond was created by Chemical Vapor Deposition (CVD) growth process.  
Indications of post-growth treatment.

**PROPORTIONS**



Sample Image Used

**CLARITY CHARACTERISTICS**



**KEY TO SYMBOLS**

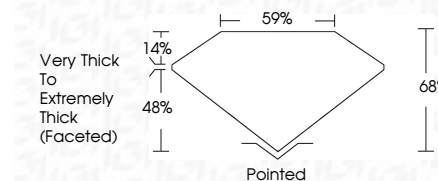
Red symbols indicate internal characteristics.  
Green symbols indicate external characteristics.

**COLOR**

D E F G H I J Faint Very Light Light

**CLARITY**

IF	VS <sup>1-2</sup>	VS <sup>1-2</sup>	SI <sup>1-2</sup>	I <sup>1-3</sup>
Internally Flawless	Very Very Slightly Included	Very Slightly Included	Slightly Included	Included



**ADDITIONAL GRADING INFORMATION**

Polish **EXCELLENT**  
Symmetry **EXCELLENT**  
Fluorescence **STRONG**  
Inscription(s) **IGI LG715572503**  
Comments: This Laboratory Grown Diamond was created by Chemical Vapor Deposition (CVD) growth process.  
Indications of post-growth treatment.



July 11, 2025  
IGI Report No LG715572503  
CUSHION MODIFIED BRILLIANT  
9.68 X 7.59 X 5.16 MM  
3.56 CARATS  
FANCY VIVID PINK  
VS 2  
68%  
59%  
Very Thick to Extremely Thick (Faceted)  
Pointed  
EXCELLENT  
EXCELLENT  
STRONG  
IGI LG715572503  
Comments: This Laboratory Grown Diamond was created by Chemical Vapor Deposition (CVD) growth process.  
Indications of post-growth treatment.