



ELECTRONIC COPY

LG715571391
Report verification at igi.org



June 27, 2025
IGI Report Number **LG715571391**
Description **LABORATORY GROWN DIAMOND**
Shape and Cutting Style **ROUND BRILLIANT**
Measurements **9.24 - 9.28 X 5.72 MM**
GRADING RESULTS
Carat Weight **3.03 CARATS**
Color Grade **FANCY VIVID BLUE**
Clarity Grade **VS 1**
Cut Grade **IDEAL**

June 27, 2025
IGI Report Number **LG715571391**
Description **LABORATORY GROWN DIAMOND**
Shape and Cutting Style **ROUND BRILLIANT**
Measurements **9.24 - 9.28 X 5.72 MM**

GRADING RESULTS

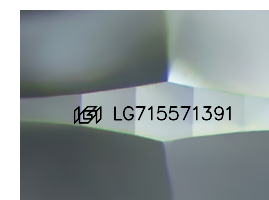
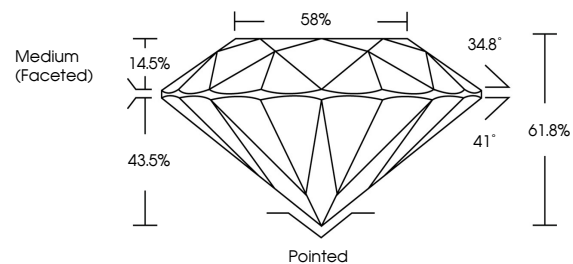
Carat Weight **3.03 CARATS**
Color Grade **FANCY VIVID BLUE**
Clarity Grade **VS 1**
Cut Grade **IDEAL**

ADDITIONAL GRADING INFORMATION

Polish **EXCELLENT**
Symmetry **EXCELLENT**
Fluorescence **NONE**
Inscription(s) **IGI LG715571391**

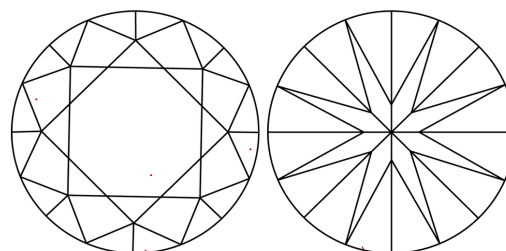
Comments: This Laboratory Grown Diamond was created by Chemical Vapor Deposition (CVD) growth process.
Indications of post-growth treatment.

PROPORTIONS



Sample Image Used

CLARITY CHARACTERISTICS



KEY TO SYMBOLS

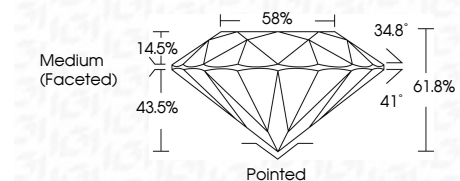
Red symbols indicate internal characteristics.
Green symbols indicate external characteristics.

COLOR

D E F G H I J Faint Very Light Light

CLARITY

IF	VS ¹⁻²	VS ¹⁻²	SI ¹⁻²	I ¹⁻³
Internally Flawless	Very Very Slightly Included	Very Slightly Included	Slightly Included	Included



ADDITIONAL GRADING INFORMATION

Polish **EXCELLENT**
Symmetry **EXCELLENT**
Fluorescence **NONE**
Inscription(s) **IGI LG715571391**
Comments: This Laboratory Grown Diamond was created by Chemical Vapor Deposition (CVD) growth process.
Indications of post-growth treatment.



June 27, 2025
IGI Report No LG715571391
ROUND BRILLIANT
3.03 CARATS
Carat Weight
Color Grade **FANCY VIVID BLUE**
Clarity Grade **VS 1**
Depth **IDEAL**
Table **61.8%**
Girdle **Medium (Faceted)**
Culet **Pointed**
Polish **EXCELLENT**
Symmetry **EXCELLENT**
Fluorescence **NONE**
Inscriptions(s) **IGI LG715571391**
Comments: This Laboratory Grown Diamond was created by Chemical Vapor Deposition (CVD) growth process.
Indications of post-growth treatment.