

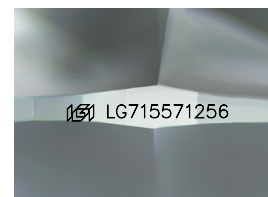
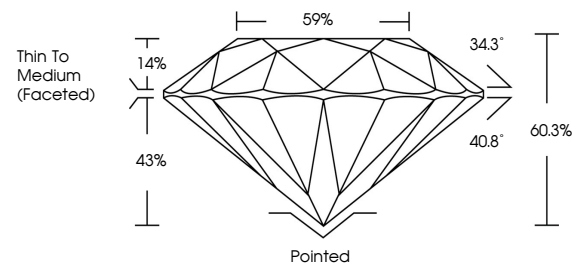


ELECTRONIC COPY

LABORATORY GROWN DIAMOND REPORT

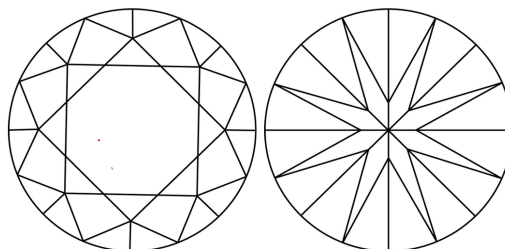
LG715571256
Report verification at igi.org

PROPORTIONS



Sample Image Used

CLARITY CHARACTERISTICS



KEY TO SYMBOLS

Red symbols indicate internal characteristics.
Green symbols indicate external characteristics.

COLOR

D E F G H I J Faint Very Light Light

CLARITY

IF WS¹⁻² VS¹⁻² SI¹⁻² |¹⁻³

Internally Flawless	Very Very Slightly Included	Very Slightly Included	Slightly Included	Included
------------------------	--------------------------------	---------------------------	----------------------	----------



June 26, 2025

IGI Report Number **LG715571256**

Description	LABORATORY GROWN DIAMOND
-------------	--------------------------

Shape and Cutting Style **ROUND BRILLIANT**

Measurements	9.18 - 9.20 X 5.54 MM
--------------	-----------------------

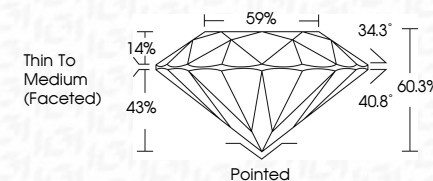
GRADING RESULTS

Carat Weight **2.87 CARATS**

Color Grade F

Clarity Grade **VVS 2**

Cut Grade **IDEAL**



ADDITIONAL GRADING INFORMATION

Polish **EXCELLENT**Symmetry **EXCELLENT**Fluorescence **NONE**Inscription(s) LG715571256

Comments: This Laboratory Grown Diamond was created by Chemical Vapor Deposition (CVD) growth process.
Type IIa



IG



© IGI 2020, International Gemological Institute

FD - 10 20

www.igi.org



THIS DOCUMENT WAS PRODUCED WITH THE FOLLOWING SECURITY MEASURES: SPECIAL DOCUMENT PAPER, INK SCREENS, WATERMARK, BACKGROUND DESIGNS, HOLOGRAM, AND OTHER SECURITY FEATURES NOT LISTED AND DO EXCEED DOCUMENT SECURITY INDUSTRY GUIDELINES.

June 26, 2026	2.87 CARATS	WGS 2	WGS 2	Pointed	Quiet	Comments: Created by Crown Diamond usa Graded by Crown Diamond usa (VD) growth process. Type IIa
GI Report No. IGT1857/265		IDEAL	60.3%	EXCELLENT	Polish	
ROUND BRILLIANT			59%	EXCELLENT	Symmetry	
			Thin To Medium (faceted)	NONE	Fluorescence	
				169.127157/126	Inscriptions(s)	
	2.87 CARATS					
	Carat Weight	Clarity Grade	Color Grade	Cut Grade	Depth	
	Color Grade	Table	Girdle			
	18 - 19 X 5.61 MM					