

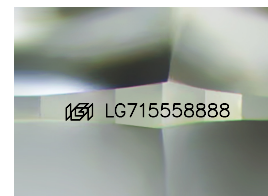
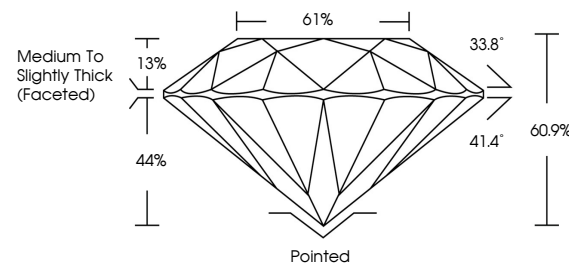


ELECTRONIC COPY

LABORATORY GROWN DIAMOND REPORT

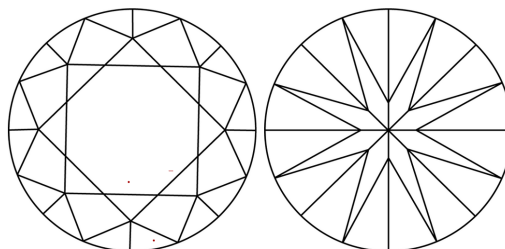
LG715558888
Report verification at igi.org

PROPORTIONS



Sample Image Used

CLARITY CHARACTERISTICS



KEY TO SYMBOLS

Red symbols indicate internal characteristics.
Green symbols indicate external characteristics.

COLOR

D E F G H I J Faint Very Light Light

CLARITY

IF WS¹⁻² VS¹⁻² SI¹⁻² |¹⁻³

Internally Flawless	Very Very Slightly Included	Very Slightly Included	Slightly Included	Included
------------------------	--------------------------------	---------------------------	----------------------	----------



June 13, 2025

IGI Report Number **LG715558888**

Description	LABORATORY GROWN DIAMOND
-------------	--------------------------

Shape and Cutting Style **ROUND BRILLIANT**

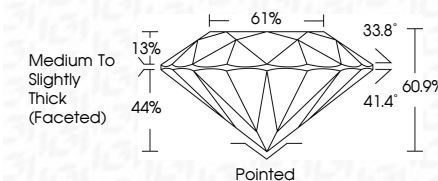
Measurements 8.24 - 8.28 X 5.03 MM

GRADING RESULTS

Carat Weight **2.10 CARATS**

Color Grade **E**Clarity Grade WS 2

Cut Grade **EXCELLENT**



ADDITIONAL GRADING INFORMATION

Polish **EXCELLENT**Symmetry **EXCELLENT**Fluorescence **NONE**Inscription(s)  LG71555888

Comments: This Laboratory Grown Diamond was created by Chemical Vapor Deposition (CVD) growth process.
Type IIa



© IGI 2020, International Gemological Institute

FD - 10 20

www.igi.org



THIS DOCUMENT WAS PRODUCED WITH THE FOLLOWING SECURITY MEASURES: SPECIAL DOCUMENT PAPER, INK SCREENS, WATERMARK, BACKGROUND DESIGNS, HOLOGRAM AND OTHER SECURITY FEATURES NOT LISTED AND DO EXCEED DOCUMENT SECURITY INDUSTRY GUIDELINE

June 13, 2026	LGI Report No. LG71559888	
ROUND BRILLIANT		
4.24 - 4.28 X 5.03 MM	2.10 CARATS	
Color Weight	E	VVS 2
Color Grade	E	EXCELLENT
Clarity Grade	EXCELLENT	60%
Cut Grade	60%	01%
Depth	Medium to Slightly Thick (faceted)	
Table		
Girdle		
Culet	Parked	
Polish	EXCELLENT	
Symmetry	EXCELLENT	
Fluorescence	NONE	
Finger(s)	#69 LG71559888	
Comments:		
This Laboratory Given Diamond was created by Chemical Vapor Deposition (CVD) growth process.		
Type IIA		