

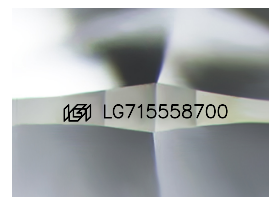
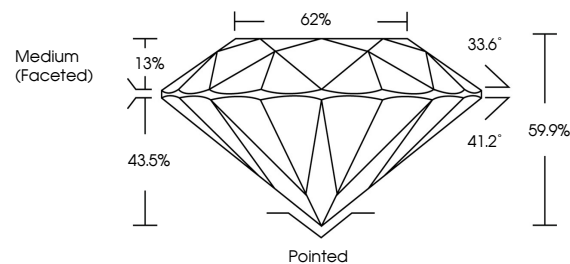


ELECTRONIC COPY

LABORATORY GROWN DIAMOND REPORT

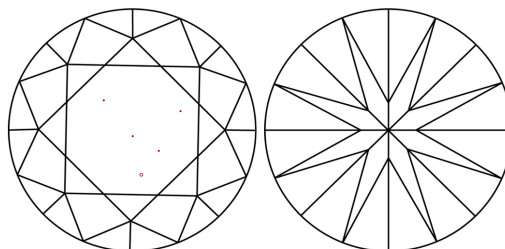
LG715558700
Report verification at igi.org

PROPORTIONS



Sample Image Used

CLARITY CHARACTERISTICS



KEY TO SYMBOLS

Red symbols indicate internal characteristics.
Green symbols indicate external characteristics.

COLOR

D E F G H I J Faint Very Light Light

CLARITY

IF WS¹⁻² VS¹⁻² SI¹⁻² |¹⁻³

Internally Flawless	Very Very Slightly Included	Very Slightly Included	Slightly Included	Included
------------------------	--------------------------------	---------------------------	----------------------	----------



June 13, 2025

IGI Report Number **LG715558700**

Description	LABORATORY GROWN DIAMOND
-------------	--------------------------

Shape and Cutting Style **ROUND BRILLIANT**

Measurements	8.03 - 8.06 X 4.82 MM
--------------	-----------------------

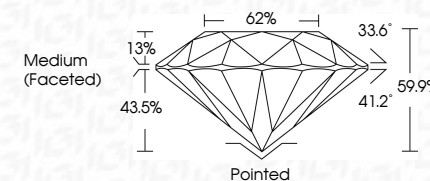
GRADING RESULTS

Carat Weight **1.90 CARAT**

Color Grade E

Clarity Grade VS 1

Cut Grade **EXCELLENT**



ADDITIONAL GRADING INFORMATION

Polish **EXCELLENT**Symmetry **EXCELLENT**Fluorescence **NONE**Inscription(s) LG715558700

Comments: This Laboratory Grown Diamond was created by Chemical Vapor Deposition (CVD) growth process.
Type IIa



© IGI 2020, International Gemological Institute

FD - 10 20



THIS DOCUMENT WAS PRODUCED WITH THE FOLLOWING SECURITY MEASURES: SPECIAL DOCUMENT PAPER, INK SCREENS, WATERMARK, BACKGROUND DESIGNS, HOLOGRAM AND OTHER SECURITY FEATURES NOT LISTED AND DO EXCEED DOCUMENT SECURITY INDUSTRY GUIDELINES

www.igi.org

June 18, 2026	GI Report No. G71558700	1.90 CARAT	Vs 1	Painted	Comments: This Laboratory Geminal Diamond was created by Chemical Vapor Deposition (CVD) growth process. Type IIa
ROUND BRILLIANT			EXCELLENT	EXCELLENT	
0.03 - 0.05 X 4.82 MM	Color Weight		58.9%	NONE	
	Color Grade		02%		
	Clarity Grade	Medium (Faceted)		#81 G71558700	
	Cut Grade				
	Depth				
	Table				
	Girdle				
	Culet				
	Polish				
	Symmetry				
	Fluorescence				
	Inscription(s)				