



ELECTRONIC COPY

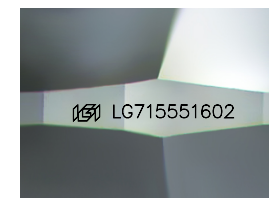
LG715551602
Report verification at igi.org



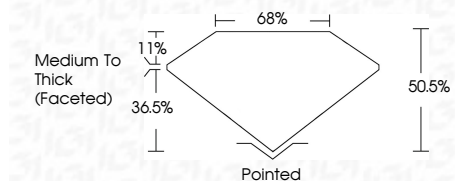
June 14, 2025
IGI Report Number **LG715551602**
Description **LABORATORY GROWN DIAMOND**
Shape and Cutting Style **TRIANGULAR BRILLIANT**
Measurements **7.31 X 7.44 X 3.76 MM**

GRADING RESULTS

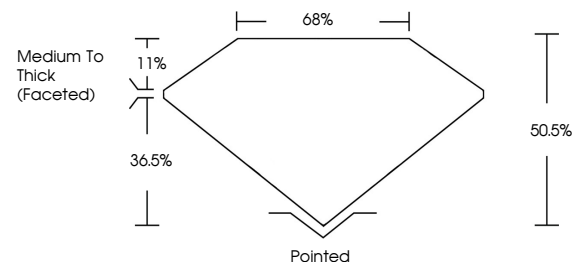
Carat Weight **1.16 CARAT**
Color Grade **E**
Clarity Grade **VS 1**



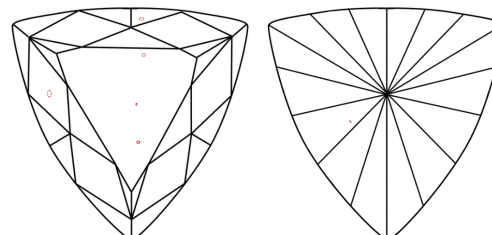
Sample Image Used



PROPORTIONS



CLARITY CHARACTERISTICS



KEY TO SYMBOLS

Red symbols indicate internal characteristics.
Green symbols indicate external characteristics.

COLOR

D E F G H I J Faint Very Light Light

CLARITY

IF	VS ¹⁻²	VS ¹⁻²	SI ¹⁻²	I ¹⁻³
Internally Flawless	Very Very Slightly Included	Very Slightly Included	Slightly Included	Included

ADDITIONAL GRADING INFORMATION

Polish **VERY GOOD**
Symmetry **EXCELLENT**
Fluorescence **NONE**
Inscription(s) **IGI LG715551602**
Comments: This Laboratory Grown Diamond was created by Chemical Vapor Deposition (CVD) growth process. Type IIa



June 14, 2025
IGI Report No LG715551602
TRIANGULAR BRILLIANT
7.31 X 7.44 X 3.76 MM
1.16 CARAT
E
VS 1
60.6%
65%
Medium To Thick (Faceted)
Pointed
VERY GOOD
EXCELLENT
NONE
IGI LG715551602
Comments: This Laboratory Grown Diamond was created by Chemical Vapor Deposition (CVD) growth process. Type IIa