

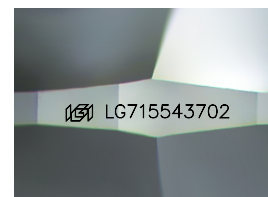
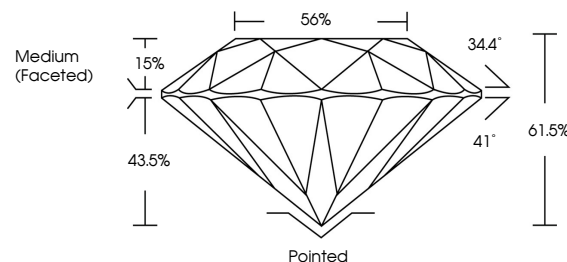


**ELECTRONIC COPY**

## LABORATORY GROWN DIAMOND REPORT

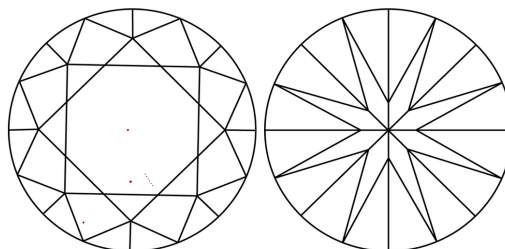
LG715543702  
Report verification at [iqi.org](https://iqi.org)

## PROPORTIONS



Sample Image Used

## CLARITY CHARACTERISTICS



## KEY TO SYMBOLS

Red symbols indicate internal characteristics.  
Green symbols indicate external characteristics.

## COLOR

D E F G H I J Faint Very Light Light

## CLARITY

IF WS<sup>1-2</sup> VS<sup>1-2</sup> SI<sup>1-2</sup> |<sup>1-3</sup>

Internally Flawless	Very Very Slightly Included	Very Slightly Included	Slightly Included	Included
------------------------	--------------------------------	---------------------------	----------------------	----------

## LABORATORY GROWN DIAMOND REPORT



June 13, 2025

IGI Report Number **LG715543702**Description **LABORATORY GROWN DIAMOND**Shape and Cutting Style **ROUND BRILLIANT**

Measurements 8.14 - 8.21 X 5.01 MM

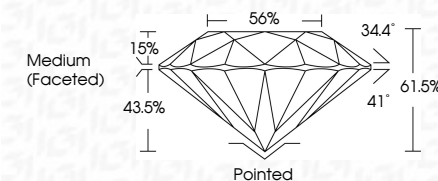
## GRADING RESULTS

Carat Weight **2.02 CARATS**

Color Grade D

Clarity Grade VVS 2

Cut Grade **IDEAL**



### ADDITIONAL GRADING INFORMATION

Polish **EXCELLENT**Symmetry **EXCELLENT**Fluorescence **NONE**Inscription(s)  LG715543702

Comments: This Laboratory Grown Diamond was created by Chemical Vapor Deposition (CVD) growth process.  
Type IIa



© IGI 2020, International Gemological Institute

FD - 10 20

**www.igi.org**



THIS DOCUMENT WAS PRODUCED WITH THE FOLLOWING SECURITY MEASURES: SPECIAL DOCUMENT PAPER, INK SCREENS, WATERMARK, BACKGROUND DESIGNS, HOLOGRAM AND OTHER SECURITY FEATURES NOT LISTED AND DO EXCEED DOCUMENT SECURITY INDUSTRY GUIDELINE

June 13, 2026	GI Report No. L6715543702	202 CARATS	W6 2	Pointed	Symmetry Fluorescence None (69) L6715543702
VIVID BRILLIANT	14 - 8.21 X 6.01 MM	Color Grade	IDEAL	EXCELLENT	
	Coral Weight	Clarity Grade	61.5%	EXCELLENT	
	Color Grade	Cut Grade	56%	EXCELLENT	
		Depth	Medium (Faceted)		
	Color Grade	Table			
		Grade			

Comments:  
 The Laboratory Gemwand was  
 created by Chemical Vapor Deposition  
 (CVD) growth process.  
 type Ila