

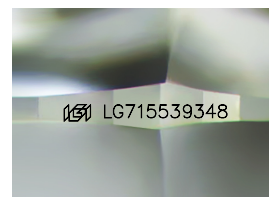
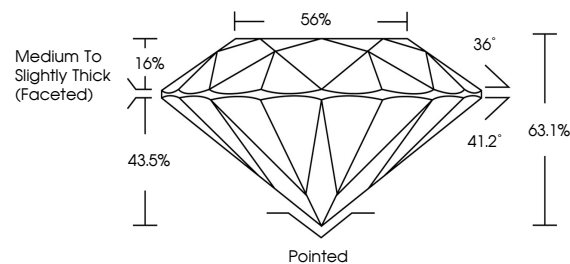


**ELECTRONIC COPY**

## LABORATORY GROWN DIAMOND REPORT

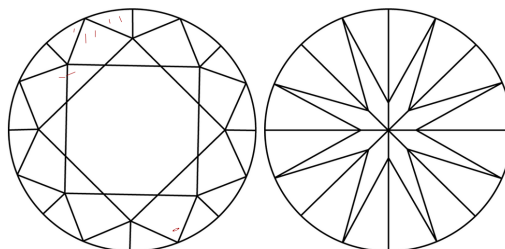
LG715539348  
Report verification at [lgi.org](https://lgi.org)

## PROPORTIONS



Sample Image Used

## CLARITY CHARACTERISTICS



## KEY TO SYMBOLS

Red symbols indicate internal characteristics.  
Green symbols indicate external characteristics.

## COLOR

D E F G H I J Faint Very Light Light

## CLARITY

IF WS<sup>1-2</sup> VS<sup>1-2</sup> SI<sup>1-2</sup> |<sup>1-3</sup>

Internally Flawless	Very Very Slightly Included	Very Slightly Included	Slightly Included	Included
------------------------	--------------------------------	---------------------------	----------------------	----------



© IGI 2020, International Gemological Institute

FD - 10 20

**www.igi.org**

## LABORATORY GROWN DIAMOND REPORT



June 12, 2025

IGI Report Number **LG715539348**

Description	LABORATORY GROWN DIAMOND
-------------	--------------------------

Shape and Cutting Style **ROUND BRILLIANT**

Measurements 6.45 - 6.50 X 4.09 MM

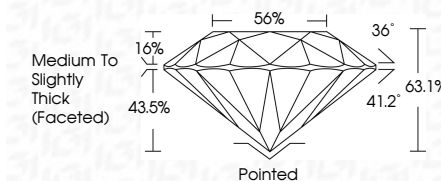
## GRADING RESULTS

Carat Weight 1.06 CARAT

Color Grade

Clarity Grade VS 1

Cut Grade **EXCELLENT**



### ADDITIONAL GRADING INFORMATION

Polish **EXCELLENT**Symmetry **EXCELLENT**Fluorescence **NONE**Inscription(s)  LG715539348

Comments: As Grown - No indication of post-growth treatment.

This Laboratory Grown Diamond was created by High Pressure High Temperature (HPHT) growth process.

Type II



June 12, 2025	1.06 CARAT	D	VSI	EXCELLENT	63.1%	56%	Medium to slightly Thick Faceted	Pointed	EXCELLENT	NONE	681 L671553946
Report No. L671553948	Color Grade	Clarity Grade	Cut Grade	Depth	Table	Grades	Culet	Polish	Symmetry	Fluorescence	Inscriptions(s)
ROUND BRILLIANT	Color Weight	4.65 X 4.60 X 4.09 MM									

Comments: As Grown - No indication of post-growth treatment.

This Laboratory Grown Diamond was created by High Pressure High Temperature (HPHT) growth process.