



ELECTRONIC COPY

LABORATORY GROWN DIAMOND REPORT

LG715537009
Report verification at igi.org

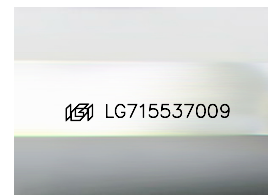
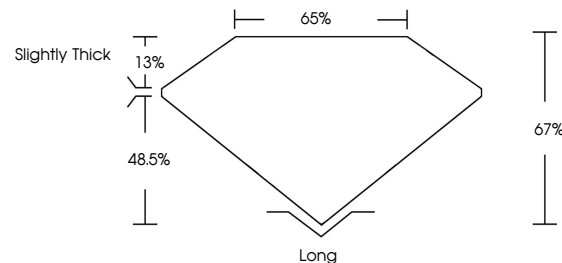
June 12, 2025	
IGI Report Number	LG715537009
Description	LABORATORY GROWN DIAMOND
Shape and Cutting Style	HEXAGONAL STEP CUT
Measurements	10.61 X 5.15 X 3.45 MM
GRADING RESULTS	
Carat Weight	1.60 CARAT
Color Grade	D
Clarity Grade	VS 1

ADDITIONAL GRADING INFORMATION

Polish	EXCELLENT
Symmetry	EXCELLENT
Fluorescence	NONE
Inscription(s)	151 LG715537009

Comments: This Laboratory Grown Diamond was created by Chemical Vapor Deposition (CVD) growth process.
Type IIa

PROPORTIONS



Sample Image Used

COLOR

D E F G H I J Faint Very Light Light

CLARITY

IF VS¹⁻² VS¹⁻² S¹⁻² |¹⁻³

Internally Flawless	Very Very Slightly Included	Very Slightly Included	Slightly Included	Included
------------------------	--------------------------------	---------------------------	----------------------	----------

LABORATORY GROWN DIAMOND REPORT



June 12, 2025	
IGI Report Number	LG715537009
Description	LABORATORY GROWN DIAMOND
Shape and Cutting Style	HEXAGONAL STEP CUT
Measurements	10.61 X 5.15 X 3.45 MM

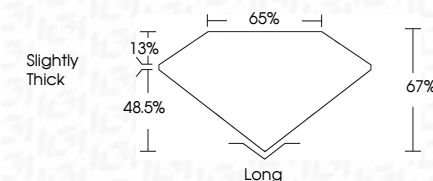
GRADING RESULTS

Carat Weight	1.60 CARAT
Color Grade	D
Clarity Grade	VS 1

ADDITIONAL GRADING INFORMATION

Polish	EXCELLENT
Symmetry	EXCELLENT
Fluorescence	NONE
Inscription(s)	(16) LG715537009

Comments: This Laboratory Grown Diamond was created by Chemical Vapor Deposition (CVD) growth process.
Type IIa



© IGI 2020, International Gemological Institute

FD - 10 20



THIS DOCUMENT WAS PRODUCED WITH THE FOLLOWING SECURITY MEASURES: SPECIAL DOCUMENT PAPER, INK SCREENS, WATERMARK, BACKGROUND DESIGNS, HOLOGRAM AND OTHER SECURITY FEATURES NOT LISTED AND DO EXCEED DOCUMENT SECURITY INDUSTRY GUIDELINES

www.igi.org

June 12, 2025
GI Report No LG715537009
HEXAGONAL STEP CUT

10.61 X 5.15 X 3.45 MM	1.60 CARAT	D
Color Weight		
Color Grade	VS 1	
Clarity Grade	67%	
Depth	66%	
Table	Slightly Thick	
Grade		
Culet	Long	
Polish	EXCELLENT	
Symmetry	EXCELLENT	
Fluorescence	NONE	
Comments	4441 12715537000	

Comments:
This Laboratory Grown Diamond was
created by Chemical Vapor Deposition
(CVD) growth process.