



ELECTRONIC COPY

LG715527796
Report verification at igi.org



June 12, 2025
IGI Report Number LG715527796
Description LABORATORY GROWN DIAMOND
Shape and Cutting Style ROUND BRILLIANT
Measurements 6.98 - 7.04 X 4.36 MM
GRADING RESULTS
Carat Weight 1.32 CARAT
Color Grade F
Clarity Grade VVS 1
Cut Grade IDEAL

LABORATORY GROWN DIAMOND REPORT

June 12, 2025
IGI Report Number LG715527796
Description LABORATORY GROWN DIAMOND
Shape and Cutting Style ROUND BRILLIANT
Measurements 6.98 - 7.04 X 4.36 MM

GRADING RESULTS

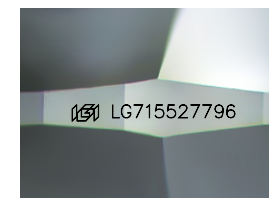
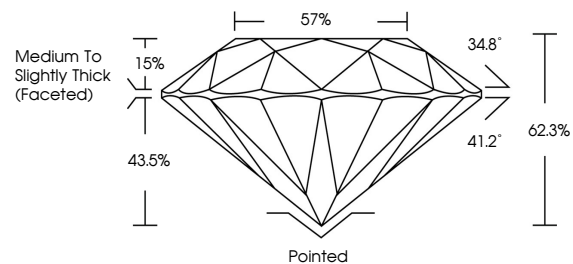
Carat Weight 1.32 CARAT
Color Grade F
Clarity Grade VVS 1
Cut Grade IDEAL

ADDITIONAL GRADING INFORMATION

Polish EXCELLENT
Symmetry EXCELLENT
Fluorescence NONE
Inscription(s) IGI LG715527796

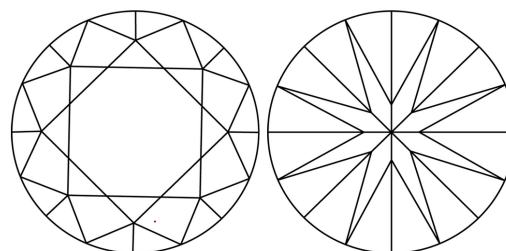
Comments: This Laboratory Grown Diamond was created by Chemical Vapor Deposition (CVD) growth process. Type IIa

PROPORTIONS



Sample Image Used

CLARITY CHARACTERISTICS



KEY TO SYMBOLS

Red symbols indicate internal characteristics.
Green symbols indicate external characteristics.

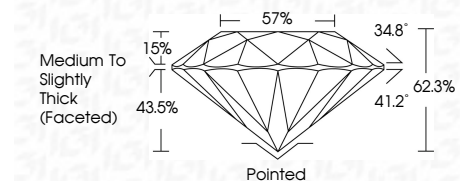
COLOR

D E F G H I J Faint Very Light Light

CLARITY

IF WS 1-2 VS 1-2 SI 1-2 I 1-3

Internally Flawless Very Very Slightly Included Very Slightly Included Slightly Included Included



ADDITIONAL GRADING INFORMATION

Polish EXCELLENT
Symmetry EXCELLENT
Fluorescence NONE
Inscription(s) IGI LG715527796
Comments: This Laboratory Grown Diamond was created by Chemical Vapor Deposition (CVD) growth process. Type IIa



June 12, 2025
IGI Report No LG715527796
ROUND BRILLIANT
6.98 - 7.04 X 4.36 MM
1.32 CARAT F
Color Grade VVS 1
Clarity Grade IDEAL
Depth 62.3%
Table 57%
Girdle Medium To Slightly Thick (Faceted)
Culet Pointed
Polish EXCELLENT
Symmetry EXCELLENT
Fluorescence NONE
Inscription(s) IGI LG715527796
Comments: This Laboratory Grown Diamond was created by Chemical Vapor Deposition (CVD) growth process. Type IIa