



ELECTRONIC COPY

LABORATORY GROWN DIAMOND REPORT

June 11, 2025	
IGI Report Number	LG715525919
Description	LABORATORY GROWN DIAMOND
Shape and Cutting Style	ROUND BRILLIANT
Measurements	7.27 - 7.30 X 4.62 MM

GRADING RESULTS

Carat Weight	1.51 CARAT
Color Grade	E
Clarity Grade	VVS 2
Cut Grade	EXCELLENT

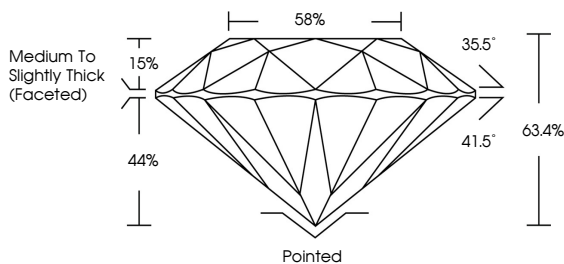
ADDITIONAL GRADING INFORMATION

Polish	EXCELLENT
Symmetry	EXCELLENT
Fluorescence	NONE
Inscription(s)	 LG715525919

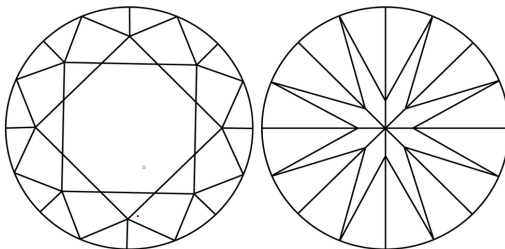
Comments: This Laboratory Grown Diamond was created by Chemical Vapor Deposition (CVD) growth process.
Type IIa

LG715525919
Report verification at igi.org

PROPORTIONS

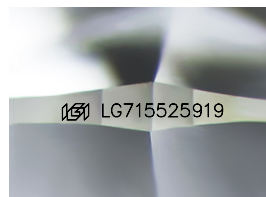


CLARITY CHARACTERISTICS



KEY TO SYMBOLS

Red symbols indicate internal characteristics.
Green symbols indicate external characteristics.



Sample Image Used

COLOR

D E F G H I J Faint Very Light Light

CLARITY

IF WS¹⁻² VS¹⁻² SI¹⁻² |¹⁻³

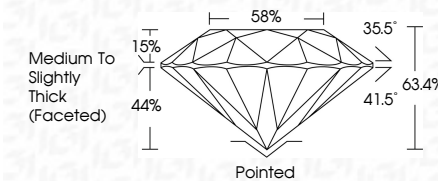
Internally Flawless	Very Very Slightly Included	Very Slightly Included	Slightly Included	Included
------------------------	--------------------------------	---------------------------	----------------------	----------



June 11, 2025	
IGI Report Number	LG715525919
Description	LABORATORY GROWN DIAMOND
Shape and Cutting Style	ROUND BRILLIANT
Measurements	7.27 - 7.30 X 4.62 MM

GRADING RESULTS

Carat Weight	1.51 CARAT
Color Grade	E
Clarity Grade	VVS 2
Cut Grade	EXCELLENT



ADDITIONAL GRADING INFORMATION

Polish	EXCELLENT
Symmetry	EXCELLENT
Fluorescence	NONE
Inscription(s)	153 LG715525919

Comments: This Laboratory Grown Diamond was created by Chemical Vapor Deposition (CVD) growth process.
Type IIa



© IGI 2020, International Gemological Institute

FD - 10 20

www.igi.org

THIS DOCUMENT WAS PRODUCED WITH THE FOLLOWING SECURITY MEASURES: SPECIAL DOCUMENT PAPER, INK SCREENS, WATERMARK, BACKGROUND DESIGNS, HOLOGRAM AND OTHER SECURITY FEATURES NOT LISTED AND DO EXCEED DOCUMENT SECURITY INDUSTRY GUIDELINES

June 11, 2025
IGI Report No LG715525919
ROUND BRILLIANT

1.51 CARAT	VVS2	EXCELLENT	63.4%	65%	Medium To Slightly Thick (occasional)	Pointed	EXCELLENT	EXCELLENT	NONE	4mm (27.16mm x 21.5mm x 8.5mm)
1.51 CARAT	VVS2	EXCELLENT	63.4%	65%	Medium To Slightly Thick (occasional)	Pointed	EXCELLENT	EXCELLENT	NONE	4mm (27.16mm x 21.5mm x 8.5mm)

Comments:
This Laboratory Grown Diamond was created by Chemical Vapor Deposition (CVD) growth process.