



**INTERNATIONAL
GEMOLOGICAL
INSTITUTE**

ELECTRONIC COPY

LABORATORY GROWN DIAMOND REPORT

June 14, 2025
 IGI Report Number **LG715524351**
 Description **LABORATORY GROWN DIAMOND**
 Shape and Cutting Style **ROUND BRILLIANT**
 Measurements **5.03 - 5.07 X 3.15 MM**

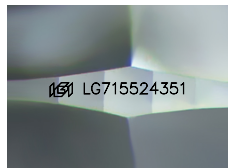
GRADING RESULTS

Carat Weight **0.48 CARAT**
 Color Grade **D**
 Clarity Grade **VVS 2**
 Cut Grade **EXCELLENT**

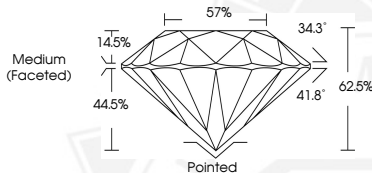
ADDITIONAL GRADING INFORMATION

Polish **VERY GOOD**
 Symmetry **VERY GOOD**
 Fluorescence **NONE**
 Inscription(s) **IGI LG715524351**

Comments: This Laboratory Grown Diamond was created by Chemical Vapor Deposition (CVD) growth process. Type IIa



Sample Image Used



June 14, 2025
 IGI Report Number **LG715524351**
 ROUND BRILLIANT
 LABORATORY GROWN DIAMOND
 5.03 - 5.07 X 3.15 MM
 Carat Weight **0.48 CARAT**
 Color Grade **D**
 Clarity Grade **VVS 2**
 Cut Grade **EXCELLENT**
 Polish **VERY GOOD**
 Symmetry **VERY GOOD**
 Fluorescence **NONE**
 Inscription(s) **IGI LG715524351**

Comments: This Laboratory Grown Diamond was created by Chemical Vapor Deposition (CVD) growth process. Type IIa



June 14, 2025
 IGI Report Number **LG715524351**
 ROUND BRILLIANT
 LABORATORY GROWN DIAMOND
 5.03 - 5.07 X 3.15 MM
 Carat Weight **0.48 CARAT**
 Color Grade **D**
 Clarity Grade **VVS 2**
 Cut Grade **EXCELLENT**
 Polish **VERY GOOD**
 Symmetry **VERY GOOD**
 Fluorescence **NONE**
 Inscription(s) **IGI LG715524351**

Comments: This Laboratory Grown Diamond was created by Chemical Vapor Deposition (CVD) growth process. Type IIa

THIS DOCUMENT WAS PRODUCED WITH THE FOLLOWING SECURITY MEASURES: SPECIAL DOCUMENT PAPER, INK SCREENS, WATERMARK, BACKGROUND DESIGN, HOLOGRAM AND OTHER SECURITY FEATURES NOT LISTED AND DO EXCEED DOCUMENT SECURITY INDUSTRY GUIDELINES.

For terms & conditions and to verify this report, please visit www.igi.org