



**ELECTRONIC COPY**

LG715510349  
Report verification at igi.org



June 13, 2025

IGI Report Number **LG715510349**

Description **LABORATORY GROWN DIAMOND**

Shape and Cutting Style **EMERALD CUT**

Measurements **14.43 X 9.63 X 6.17 MM**

**GRADING RESULTS**

Carat Weight **8.62 CARATS**

Color Grade **F**

Clarity Grade **VVS 2**

June 13, 2025  
IGI Report Number **LG715510349**  
Description **LABORATORY GROWN DIAMOND**  
Shape and Cutting Style **EMERALD CUT**  
Measurements **14.43 X 9.63 X 6.17 MM**

**GRADING RESULTS**

Carat Weight **8.62 CARATS**

Color Grade **F**

Clarity Grade **VVS 2**

**ADDITIONAL GRADING INFORMATION**

Polish **EXCELLENT**

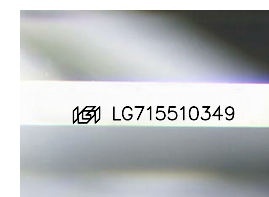
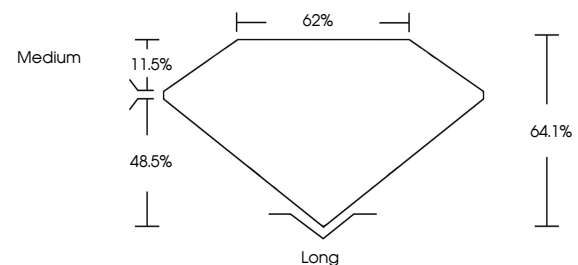
Symmetry **EXCELLENT**

Fluorescence **NONE**

Inscription(s) **IGI LG715510349**

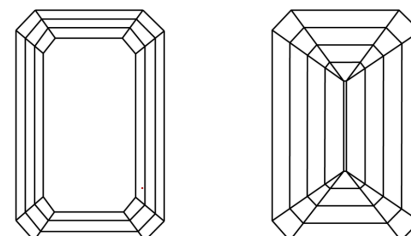
Comments: This Laboratory Grown Diamond was created by Chemical Vapor Deposition (CVD) growth process. Type IIa

**PROPORTIONS**



Sample Image Used

**CLARITY CHARACTERISTICS**



**KEY TO SYMBOLS**

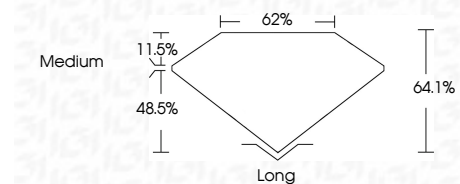
Red symbols indicate internal characteristics.  
Green symbols indicate external characteristics.

**COLOR**

D E F G H I J Faint Very Light Light

**CLARITY**

IF	VS <sup>1-2</sup>	VS <sup>1-2</sup>	SI <sup>1-2</sup>	I <sup>1-3</sup>
Internally Flawless	Very Very Slightly Included	Very Slightly Included	Slightly Included	Included



**ADDITIONAL GRADING INFORMATION**

Polish **EXCELLENT**

Symmetry **EXCELLENT**

Fluorescence **NONE**

Inscription(s) **IGI LG715510349**

Comments: This Laboratory Grown Diamond was created by Chemical Vapor Deposition (CVD) growth process. Type IIa



**IGI**



June 13, 2025	IGI Report No LG715510349	EMERALD CUT	14.43 X 9.63 X 6.17 MM	8.62 CARATS	F	VVS 2	64.1%	62%	Medium	Long	EXCELLENT	EXCELLENT	NONE	IGI LG715510349
IGI Report No LG715510349	EMERALD CUT	14.43 X 9.63 X 6.17 MM	8.62 CARATS	F	VVS 2	64.1%	62%	Medium	Long	EXCELLENT	EXCELLENT	NONE	IGI LG715510349	Comments: This Laboratory Grown Diamond was created by Chemical Vapor Deposition (CVD) growth process. Type IIa