



**ELECTRONIC COPY**

LG714507574  
Report verification at igi.org



June 30, 2025  
IGI Report Number **LG714507574**  
Description **LABORATORY GROWN DIAMOND**  
Shape and Cutting Style **SQUARE CUSHION MODIFIED BRILLIANT**  
Measurements **5.53 X 5.52 X 4.02 MM**  
**GRADING RESULTS**  
Carat Weight **1.00 CARAT**  
Color Grade **FANCY INTENSE PINK**  
Clarity Grade **VVS 2**

June 30, 2025  
IGI Report Number **LG714507574**  
Description **LABORATORY GROWN DIAMOND**  
Shape and Cutting Style **SQUARE CUSHION MODIFIED BRILLIANT**  
Measurements **5.53 X 5.52 X 4.02 MM**

**GRADING RESULTS**

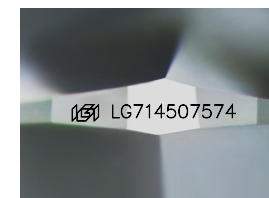
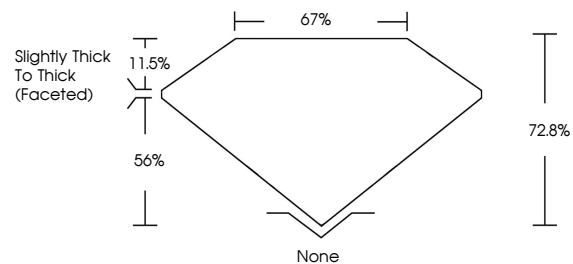
Carat Weight **1.00 CARAT**  
Color Grade **FANCY INTENSE PINK**  
Clarity Grade **VVS 2**

**ADDITIONAL GRADING INFORMATION**

Polish **VERY GOOD**  
Symmetry **VERY GOOD**  
Fluorescence **STRONG**  
Inscription(s) **IGI LG714507574**

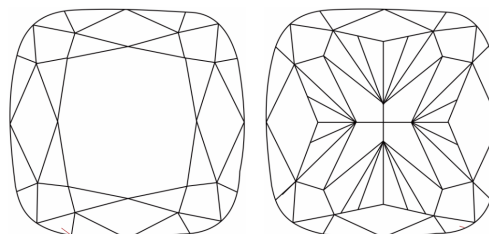
Comments: This Laboratory Grown Diamond was created by Chemical Vapor Deposition (CVD) growth process.  
Indications of post-growth treatment.

**PROPORTIONS**



Sample Image Used

**CLARITY CHARACTERISTICS**



**KEY TO SYMBOLS**

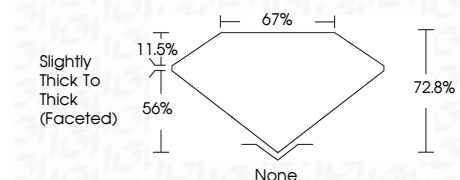
Red symbols indicate internal characteristics.  
Green symbols indicate external characteristics.

**COLOR**

D E F G H I J Faint Very Light Light

**CLARITY**

IF	VS <sup>1-2</sup>	VS <sup>1-2</sup>	SI <sup>1-2</sup>	I <sup>1-3</sup>
Internally Flawless	Very Very Slightly Included	Very Slightly Included	Slightly Included	Included



**ADDITIONAL GRADING INFORMATION**

Polish **VERY GOOD**  
Symmetry **VERY GOOD**  
Fluorescence **STRONG**  
Inscription(s) **IGI LG714507574**  
Comments: This Laboratory Grown Diamond was created by Chemical Vapor Deposition (CVD) growth process.  
Indications of post-growth treatment.



June 30, 2025  
IGI Report No **LG714507574**  
**SQUARE CUSHION MODIFIED BRILLIANT**  
**1.00 CARAT**  
**FANCY INTENSE PINK**  
**VVS 2**  
**72.8%**  
**67%**  
**Slightly Thick To Thick (Faceted)**  
**None**  
**VERY GOOD**  
**VERY GOOD**  
**STRONG**  
**IGI LG714507574**  
Comments: This Laboratory Grown Diamond was created by Chemical Vapor Deposition (CVD) growth process.  
Indications of post-growth treatment.