

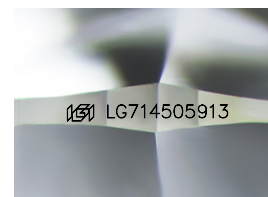
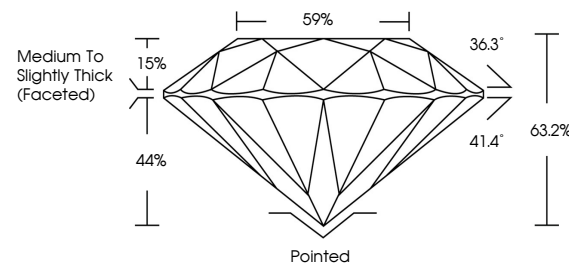


**ELECTRONIC COPY**

## LABORATORY GROWN DIAMOND REPORT

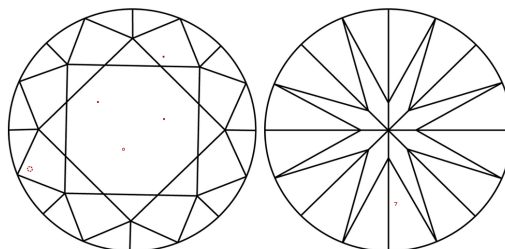
LG714505913  
Report verification at [igi.org](https://igi.org)

## PROPORTIONS



Sample Image Used

## CLARITY CHARACTERISTICS



## KEY TO SYMBOLS

Red symbols indicate internal characteristics.  
Green symbols indicate external characteristics.

## COLOR

D E F G H I J Faint Very Light Light

## CLARITY

IF WS<sup>1-2</sup> VS<sup>1-2</sup> SI<sup>1-2</sup> |<sup>1-3</sup>

Internally Flawless	Very Very Slightly Included	Very Slightly Included	Slightly Included	Included
------------------------	--------------------------------	---------------------------	----------------------	----------



June 10, 2025

IGI Report Number **LG714505913**

Description	LABORATORY GROWN DIAMOND
-------------	--------------------------

Shape and Cutting Style **ROUND BRILLIANT**

Measurements 7.30 - 7.33 X 4.62 MM

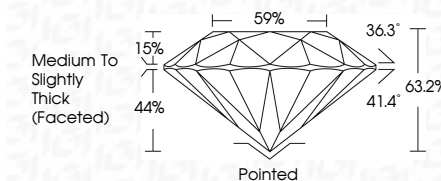
## GRADING RESULTS

Carat Weight **1.54 CARAT**

Color Grade	D
-------------	---

Clarity Grade VS 1

Cut Grade **EXCELLENT**



### ADDITIONAL GRADING INFORMATION

Polish **EXCELLENT**Symmetry **EXCELLENT**Fluorescence **NONE**Inscription(s)  LG714505913

Comments: This Laboratory Grown Diamond was created by Chemical Vapor Deposition (CVD) growth process.  
Type IIa



© IGI 2020, International Gemological Institute

FD - 10 20

**www.igi.org**



THIS DOCUMENT WAS PRODUCED WITH THE FOLLOWING SECURITY MEASURES: SPECIAL DOCUMENT PAPER, INK SCREENS, WATERMARK, BACKGROUND DESIGNS, HOLOGRAM AND OTHER SECURITY FEATURES NOT LISTED AND DO EXCEED DOCUMENT SECURITY INDUSTRY GUIDELINE

June 10, 2025  
IGI Report No LG714505913  
ROUND BRILLIANT

7.30 - 7.33 X 4.62 MM	1.54 CARAT	D
Carat Weight	VS 1	EXCELLENT
Color Grade	63.2%	59%
Cut Grade	Medium to Slightly Thick (faceted)	Pointed
Depth		EXCELLENT
Table		EXCELLENT
Girdle		NONE
Culet		None (CT# 402013)
Polish		Fluorescence
Symmetry		
Fluorescence		

**Comments:**  
This Laboratory Grown Diamond was  
created by Chemical Vapor Deposition  
(CVD) growth process.