



ELECTRONIC COPY

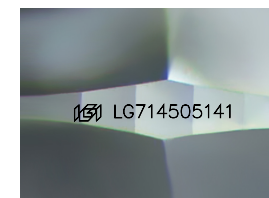
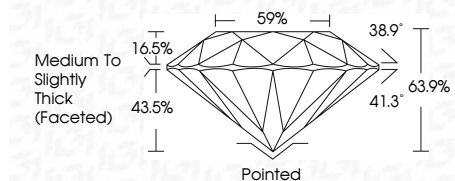
LG714505141
Report verification at igi.org



June 13, 2025
IGI Report Number **LG714505141**
Description **LABORATORY GROWN DIAMOND**
Shape and Cutting Style **ROUND BRILLIANT**
Measurements **6.65 - 6.71 X 4.27 MM**

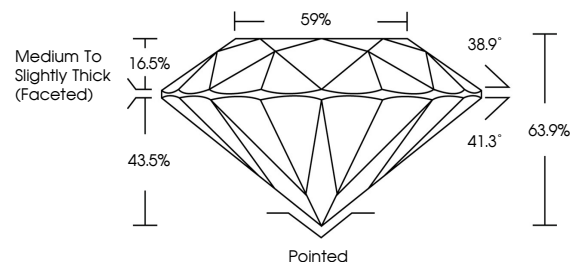
GRADING RESULTS

Carat Weight **1.20 CARAT**
Color Grade **E**
Clarity Grade **VS 1**
Cut Grade **GOOD**

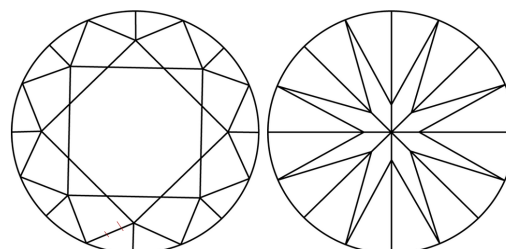


Sample Image Used

PROPORTIONS



CLARITY CHARACTERISTICS



KEY TO SYMBOLS

Red symbols indicate internal characteristics.
Green symbols indicate external characteristics.

COLOR

D E F G H I J Faint Very Light Light

CLARITY

IF VS¹⁻² VS¹⁻² SI¹⁻² I¹⁻³

Internally Flawless Very Very Slightly Included Very Slightly Included Slightly Included Included

ADDITIONAL GRADING INFORMATION

Polish **VERY GOOD**
Symmetry **VERY GOOD**
Fluorescence **NONE**
Inscription(s) **IGI LG714505141**
Comments: As Grown - No indication of post-growth treatment.
This Laboratory Grown Diamond was created by High Pressure High Temperature (HPHT) growth process.
Type II



IGI



June 13, 2025
IGI Report No LG714505141
ROUND BRILLIANT
6.65 - 6.71 X 4.27 MM
1.20 CARAT
E
Color Grade
VS 1
GOOD
63.9%
59%
Medium To Slightly Thick (Faceted)
Pointed
Culet
Polish
VERY GOOD
Symmetry
VERY GOOD
Fluorescence
NONE
Inscription(s)
IGI LG714505141
Comments:
As Grown - No indication of post-growth treatment.
This Laboratory Grown Diamond was created by High Pressure High Temperature (HPHT) growth process.
Type II