



**ELECTRONIC COPY**

LG714505070  
Report verification at igi.org



June 13, 2025  
IGI Report Number **LG714505070**  
Description **LABORATORY GROWN DIAMOND**  
Shape and Cutting Style **ROUND BRILLIANT**  
Measurements **6.89 - 6.94 X 4.32 MM**  
**GRADING RESULTS**  
Carat Weight **1.29 CARAT**  
Color Grade **D**  
Clarity Grade **VS 2**  
Cut Grade **GOOD**

June 13, 2025  
IGI Report Number **LG714505070**  
Description **LABORATORY GROWN DIAMOND**  
Shape and Cutting Style **ROUND BRILLIANT**  
Measurements **6.89 - 6.94 X 4.32 MM**

**GRADING RESULTS**

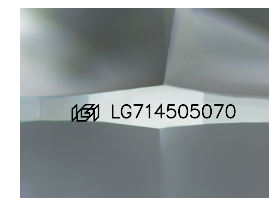
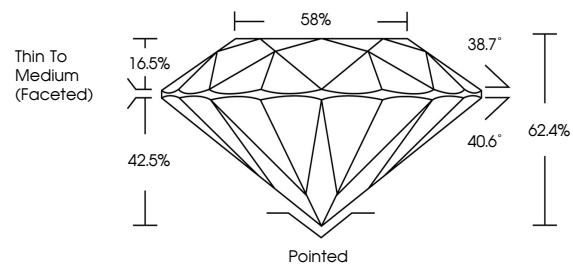
Carat Weight **1.29 CARAT**  
Color Grade **D**  
Clarity Grade **VS 2**  
Cut Grade **GOOD**

**ADDITIONAL GRADING INFORMATION**

Polish **VERY GOOD**  
Symmetry **VERY GOOD**  
Fluorescence **NONE**  
Inscription(s) **IGI LG714505070**

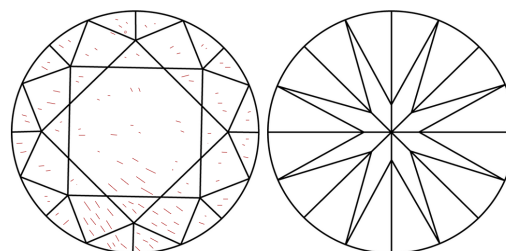
Comments: As Grown - No indication of post-growth treatment.  
This Laboratory Grown Diamond was created by High Pressure High Temperature (HPHT) growth process.  
Type II

**PROPORTIONS**



Sample Image Used

**CLARITY CHARACTERISTICS**



**KEY TO SYMBOLS**

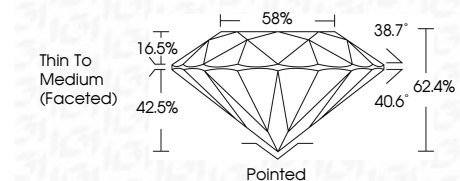
Red symbols indicate internal characteristics.  
Green symbols indicate external characteristics.

**COLOR**

D E F G H I J Faint Very Light Light

**CLARITY**

IF	VS <sup>1-2</sup>	VS <sup>1-2</sup>	SI <sup>1-2</sup>	I <sup>1-3</sup>
Internally Flawless	Very Very Slightly Included	Very Slightly Included	Slightly Included	Included



**ADDITIONAL GRADING INFORMATION**

Polish **VERY GOOD**  
Symmetry **VERY GOOD**  
Fluorescence **NONE**  
Inscription(s) **IGI LG714505070**  
Comments: As Grown - No indication of post-growth treatment.  
This Laboratory Grown Diamond was created by High Pressure High Temperature (HPHT) growth process.  
Type II



June 13, 2025  
IGI Report No LG714505070  
ROUND BRILLIANT  
6.89 - 6.94 X 4.32 MM  
1.29 CARAT  
D  
VS 2  
GOOD  
62.4%  
58%  
Thin To Medium (Faceted)  
Pointed  
VERY GOOD  
VERY GOOD  
VERY GOOD  
NONE  
IGI LG714505070  
Comments: As Grown - No indication of post-growth treatment.  
This Laboratory Grown Diamond was created by High Pressure High Temperature (HPHT) growth process.  
Type II