



ELECTRONIC COPY

LG714504501
Report verification at igi.org

LABORATORY GROWN DIAMOND REPORT

June 9, 2025
IGI Report Number **LG714504501**
Description **LABORATORY GROWN DIAMOND**
Shape and Cutting Style **CUT CORNERED RECTANGULAR MODIFIED BRILLIANT**
Measurements **13.82 X 9.42 X 6.09 MM**

GRADING RESULTS

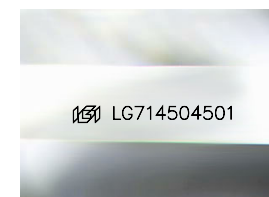
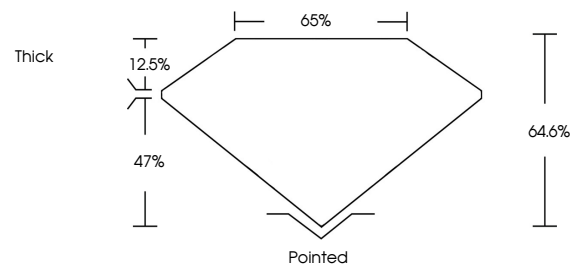
Carat Weight **7.09 CARATS**
Color Grade **D**
Clarity Grade **VS 2**

ADDITIONAL GRADING INFORMATION

Polish **EXCELLENT**
Symmetry **EXCELLENT**
Fluorescence **NONE**
Inscription(s) **IGI LG714504501**

Comments: This Laboratory Grown Diamond was created by Chemical Vapor Deposition (CVD) growth process.
Type IIa

PROPORTIONS



Sample Image Used

COLOR

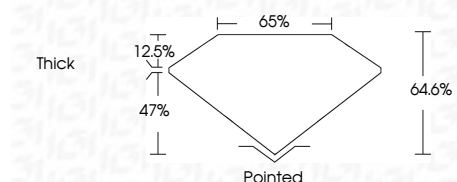
D E F G H I J Faint Very Light Light

CLARITY

| IF | VS ¹⁻² | VS ¹⁻² | SI ¹⁻² | I ¹⁻³ |
|---------------------|-----------------------------|------------------------|-------------------|------------------|
| Internally Flawless | Very Very Slightly Included | Very Slightly Included | Slightly Included | Included |



June 9, 2025
IGI Report Number **LG714504501**
Description **LABORATORY GROWN DIAMOND**
Shape and Cutting Style **CUT CORNERED RECTANGULAR MODIFIED BRILLIANT**
Measurements **13.82 X 9.42 X 6.09 MM**
GRADING RESULTS
Carat Weight **7.09 CARATS**
Color Grade **D**
Clarity Grade **VS 2**



ADDITIONAL GRADING INFORMATION

Polish **EXCELLENT**
Symmetry **EXCELLENT**
Fluorescence **NONE**
Inscription(s) **IGI LG714504501**
Comments: This Laboratory Grown Diamond was created by Chemical Vapor Deposition (CVD) growth process.
Type IIa



June 9, 2025
IGI Report No LG714504501
CUT CORNERED RECT. MODIFIED BRILLIANT
13.82 X 9.42 X 6.09 MM
7.09 CARATS
D
VS 2
64.6%
65%
Thick
Pointed
EXCELLENT
EXCELLENT
NONE
IGI LG714504501

Comments: This Laboratory Grown Diamond was created by Chemical Vapor Deposition (CVD) growth process.
Type IIa