



**ELECTRONIC COPY**

LG714504320  
Report verification at igi.org



June 25, 2025  
IGI Report Number **LG714504320**  
Description **LABORATORY GROWN DIAMOND**  
Shape and Cutting Style **SQUARE EMERALD CUT**  
Measurements **14.97 X 14.37 X 9.65 MM**  
**GRADING RESULTS**  
Carat Weight **20.10 CARATS**  
Color Grade **FANCY INTENSE PINK**  
Clarity Grade **VS 2**

June 25, 2025  
IGI Report Number **LG714504320**  
Description **LABORATORY GROWN DIAMOND**  
Shape and Cutting Style **SQUARE EMERALD CUT**  
Measurements **14.97 X 14.37 X 9.65 MM**

**GRADING RESULTS**

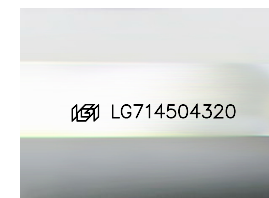
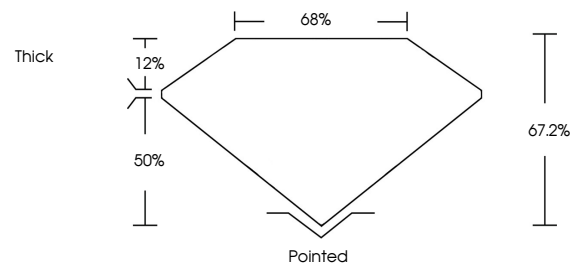
Carat Weight **20.10 CARATS**  
Color Grade **FANCY INTENSE PINK**  
Clarity Grade **VS 2**

**ADDITIONAL GRADING INFORMATION**

Polish **EXCELLENT**  
Symmetry **EXCELLENT**  
Fluorescence **STRONG**  
Inscription(s) **IGI LG714504320**

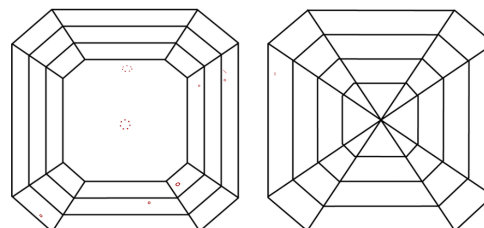
Comments: This Laboratory Grown Diamond was created by Chemical Vapor Deposition (CVD) growth process.  
Indications of post-growth treatment.

**PROPORTIONS**



Sample Image Used

**CLARITY CHARACTERISTICS**



**KEY TO SYMBOLS**

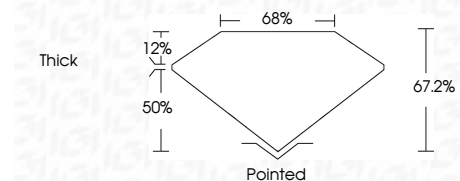
Red symbols indicate internal characteristics.  
Green symbols indicate external characteristics.

**COLOR**

D E F G H I J Faint Very Light Light

**CLARITY**

IF	VS <sup>1-2</sup>	VS <sup>1-2</sup>	SI <sup>1-2</sup>	I <sup>1-3</sup>
Internally Flawless	Very Very Slightly Included	Very Slightly Included	Slightly Included	Included



**ADDITIONAL GRADING INFORMATION**

Polish **EXCELLENT**  
Symmetry **EXCELLENT**  
Fluorescence **STRONG**  
Inscription(s) **IGI LG714504320**  
Comments: This Laboratory Grown Diamond was created by Chemical Vapor Deposition (CVD) growth process.  
Indications of post-growth treatment.



**IGI**



June 25, 2025  
IGI Report No LG714504320  
SQUARE EMERALD CUT  
20.10 CARATS  
FANCY INTENSE PINK  
VS 2  
67.2%  
65%  
Thick  
Pointed  
EXCELLENT  
EXCELLENT  
STRONG  
IGI LG714504320  
Comments: This Laboratory Grown Diamond was created by Chemical Vapor Deposition (CVD) growth process.  
Indications of post-growth treatment.