



ELECTRONIC COPY

LG714504299
Report verification at igi.org



June 19, 2025

IGI Report Number **LG714504299**

Description **LABORATORY GROWN DIAMOND**

Shape and Cutting Style **PRINCESS CUT**

Measurements **9.75 X 9.71 X 6.87 MM**

GRADING RESULTS

Carat Weight **5.71 CARATS**

Color Grade **F**

Clarity Grade **VS 1**

June 19, 2025
IGI Report Number **LG714504299**
Description **LABORATORY GROWN DIAMOND**
Shape and Cutting Style **PRINCESS CUT**
Measurements **9.75 X 9.71 X 6.87 MM**

GRADING RESULTS

Carat Weight **5.71 CARATS**

Color Grade **F**

Clarity Grade **VS 1**

ADDITIONAL GRADING INFORMATION

Polish **EXCELLENT**

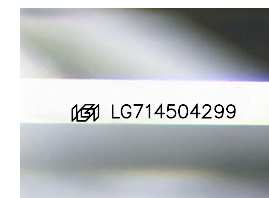
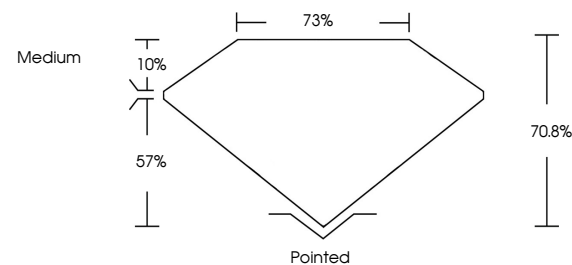
Symmetry **EXCELLENT**

Fluorescence **NONE**

Inscription(s) **IGI LG714504299**

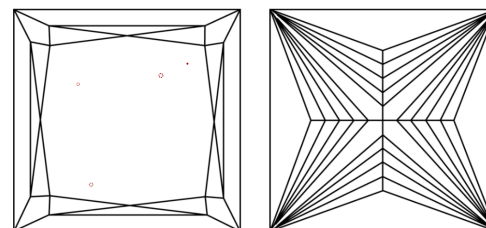
Comments: This Laboratory Grown Diamond was created by Chemical Vapor Deposition (CVD) growth process.
Type IIa

PROPORTIONS



Sample Image Used

CLARITY CHARACTERISTICS



KEY TO SYMBOLS

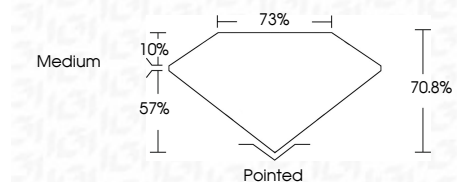
Red symbols indicate internal characteristics.
Green symbols indicate external characteristics.

COLOR

D E F G H I J Faint Very Light Light

CLARITY

| | | | | |
|---------------------|-----------------------------|------------------------|-------------------|------------------|
| IF | VS ¹⁻² | VS ¹⁻² | SI ¹⁻² | I ¹⁻³ |
| Internally Flawless | Very Very Slightly Included | Very Slightly Included | Slightly Included | Included |



ADDITIONAL GRADING INFORMATION

Polish **EXCELLENT**

Symmetry **EXCELLENT**

Fluorescence **NONE**

Inscription(s) **IGI LG714504299**

Comments: This Laboratory Grown Diamond was created by Chemical Vapor Deposition (CVD) growth process.
Type IIa



IGI



June 19, 2025
IGI Report No LG714504299
PRINCESS CUT
5.71 CARATS
F
9.75 X 9.71 X 6.87 MM
Color Grade
VS 1
Depth 70.8%
Table 73%
Girdle
Medium
Pointed
EXCELLENT
EXCELLENT
NONE
IGI LG714504299
Comments: This Laboratory Grown Diamond was created by Chemical Vapor Deposition (CVD) growth process.
Type IIa