



ELECTRONIC COPY

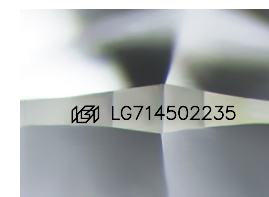
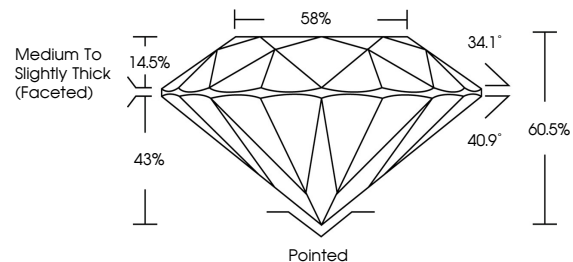
LG714502235
Report verification at igi.org



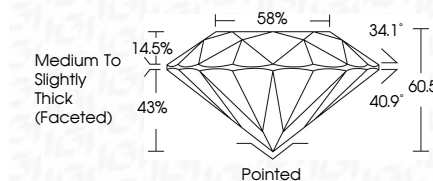
June 9, 2025
IGI Report Number **LG714502235**
Description **LABORATORY GROWN DIAMOND**
Shape and Cutting Style **ROUND BRILLIANT**
Measurements **9.57 - 9.60 X 5.80 MM**
GRADING RESULTS
Carat Weight **3.25 CARATS**
Color Grade **D**
Clarity Grade **SI 1**
Cut Grade **IDEAL**

June 9, 2025
IGI Report Number **LG714502235**
Description **LABORATORY GROWN DIAMOND**
Shape and Cutting Style **ROUND BRILLIANT**
Measurements **9.57 - 9.60 X 5.80 MM**
GRADING RESULTS
Carat Weight **3.25 CARATS**
Color Grade **D**
Clarity Grade **SI 1**
Cut Grade **IDEAL**

PROPORTIONS



Sample Image Used



ADDITIONAL GRADING INFORMATION

Polish **EXCELLENT**
Symmetry **EXCELLENT**
Fluorescence **NONE**
Inscription(s) **IGI LG714502235**

Comments: This Laboratory Grown Diamond was created by Chemical Vapor Deposition (CVD) growth process. Type IIa

ADDITIONAL GRADING INFORMATION

Polish **EXCELLENT**
Symmetry **EXCELLENT**
Fluorescence **NONE**
Inscription(s) **IGI LG714502235**
Comments: This Laboratory Grown Diamond was created by Chemical Vapor Deposition (CVD) growth process. Type IIa

COLOR

D E F G H I J Faint Very Light Light

CLARITY

IF VS¹⁻² VS¹⁻² SI¹⁻² I¹⁻³
Internally Flawless Very Very Slightly Included Very Slightly Included Slightly Included Included



IGI



June 9, 2025
IGI Report No LG714502235
ROUND BRILLIANT
9.57 - 9.60 X 5.80 MM
3.25 CARATS
Color Grade **D**
Clarity Grade **SI 1**
Depth **60.5%**
Table **14.5%**
Girdle **Medium To Slightly Thick (Faceted)**
Culet **Pointed**
Polish **EXCELLENT**
Symmetry **EXCELLENT**
Fluorescence **NONE**
Inscriptions(s) **IGI LG714502235**
Comments: This Laboratory Grown Diamond was created by Chemical Vapor Deposition (CVD) growth process. Type IIa