



INTERNATIONAL GEMOLOGICAL INSTITUTE

ELECTRONIC COPY



June 9, 2025

IGI Report Number LG713599688

PRINCESS CUT

LABORATORY GROWN DIAMOND

5.45 X 5.28 X 3.75 MM

Carat Weight 0.97 CARAT

Color Grade F

Clarity Grade VVS 2

Polish EXCELLENT

Symmetry EXCELLENT

Fluorescence NONE

Inscription(s) IGI LG713599688

Comments: This Laboratory Grown Diamond was created by Chemical Vapor Deposition (CVD) growth process. Type IIa

LABORATORY GROWN DIAMOND REPORT

June 9, 2025

IGI Report Number

LG713599688

Description

LABORATORY GROWN DIAMOND

Shape and Cutting Style

PRINCESS CUT

Measurements

5.45 X 5.28 X 3.75 MM

GRADING RESULTS

Carat Weight

0.97 CARAT

Color Grade

F

Clarity Grade

VVS 2

ADDITIONAL GRADING INFORMATION

Polish

EXCELLENT

Symmetry

EXCELLENT

Fluorescence

NONE

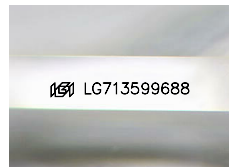
Inscription(s)

IGI LG713599688

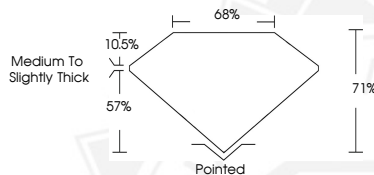
Comments: This Laboratory Grown Diamond was created by

Chemical Vapor Deposition (CVD) growth process.

Type IIa



Sample Image Used



June 9, 2025

IGI Report Number LG713599688

PRINCESS CUT

LABORATORY GROWN DIAMOND

5.45 X 5.28 X 3.75 MM

Carat Weight 0.97 CARAT

Color Grade F

Clarity Grade VVS 2

Polish EXCELLENT

Symmetry EXCELLENT

Fluorescence NONE

Inscription(s) IGI LG713599688

Comments: This Laboratory Grown Diamond was created by Chemical Vapor Deposition (CVD) growth process. Type IIa



THIS DOCUMENT WAS PRODUCED WITH THE FOLLOWING SECURITY MEASURES: SPECIAL DOCUMENT PAPER, INK SCREENS, WATERMARK, BACKGROUND DESIGN, HOLOGRAM AND OTHER SECURITY FEATURES NOT LISTED AND DO EXCEED DOCUMENT SECURITY INDUSTRY GUIDELINES.

For terms & conditions and to verify this report, please visit www.igi.org