



ELECTRONIC COPY

LABORATORY GROWN DIAMOND REPORT

June 9, 2025  
IGI Report Number LG713595165  
Description LABORATORY GROWN DIAMOND  
Shape and Cutting Style CUT CORNERED RECTANGULAR MODIFIED BRILLIANT  
Measurements 8.20 X 5.76 X 3.75 MM

GRADING RESULTS

Carat Weight 1.55 CARAT  
Color Grade D  
Clarity Grade VVS 2

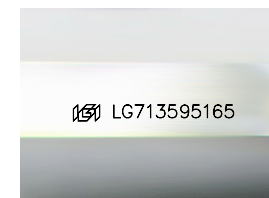
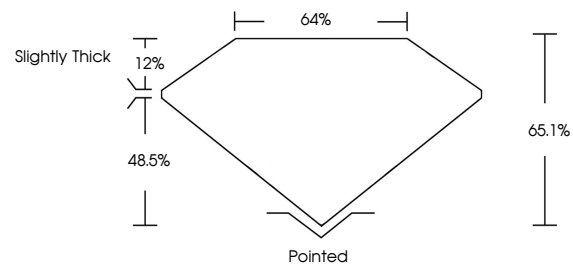
ADDITIONAL GRADING INFORMATION

Polish EXCELLENT  
Symmetry EXCELLENT  
Fluorescence NONE

Inscription(s) LG713595165

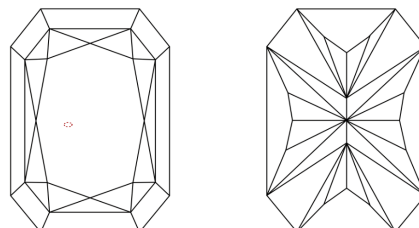
Comments: This Laboratory Grown Diamond was created by Chemical Vapor Deposition (CVD) growth process.  
Type IIa

PROPORTIONS



Sample Image Used

CLARITY CHARACTERISTICS



KEY TO SYMBOLS

Red symbols indicate internal characteristics.  
Green symbols indicate external characteristics.

COLOR

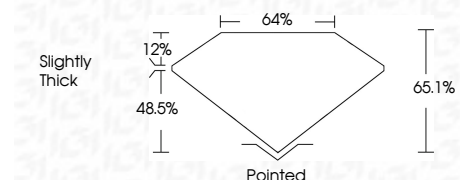
D E F G H I J Faint Very Light Light

CLARITY

IF VS<sup>1-2</sup> VS<sup>1-2</sup> SI<sup>1-2</sup> I<sup>1-3</sup>  
Internally Flawless Very Very Slightly Included Very Slightly Included Slightly Included Included



June 9, 2025  
IGI Report Number LG713595165  
Description LABORATORY GROWN DIAMOND  
Shape and Cutting Style CUT CORNERED RECTANGULAR MODIFIED BRILLIANT  
Measurements 8.20 X 5.76 X 3.75 MM  
GRADING RESULTS  
Carat Weight 1.55 CARAT  
Color Grade D  
Clarity Grade VVS 2



ADDITIONAL GRADING INFORMATION

Polish EXCELLENT  
Symmetry EXCELLENT  
Fluorescence NONE  
Inscription(s) LG713595165  
Comments: This Laboratory Grown Diamond was created by Chemical Vapor Deposition (CVD) growth process.  
Type IIa



IGI



June 9, 2025  
IGI Report No LG713595165  
CUT CORNERED RECT. MODIFIED BRILLIANT  
8.20 X 5.76 X 3.75 MM  
Carat Weight 1.55 CARAT  
Color Grade D  
Clarity Grade VVS 2  
Depth 48.5%  
Table 12%  
Girdle Slightly Thick  
Culet Pointed  
Polish EXCELLENT  
Symmetry EXCELLENT  
Fluorescence NONE  
Inscription(s) LG713595165  
Comments: This Laboratory Grown Diamond was created by Chemical Vapor Deposition (CVD) growth process.  
Type IIa