



ELECTRONIC COPY

LG713591842
Report verification at igi.org



June 14, 2025
IGI Report Number **LG713591842**
Description **LABORATORY GROWN DIAMOND**
Shape and Cutting Style **SQUARE CUSHION MODIFIED BRILLIANT**
Measurements **8.55 X 8.42 X 5.81 MM**
GRADING RESULTS
Carat Weight **3.52 CARATS**
Color Grade **LIGHT PINKISH BROWN**
Clarity Grade **VS 1**

LABORATORY GROWN DIAMOND REPORT

June 14, 2025
IGI Report Number **LG713591842**
Description **LABORATORY GROWN DIAMOND**
Shape and Cutting Style **SQUARE CUSHION MODIFIED BRILLIANT**
Measurements **8.55 X 8.42 X 5.81 MM**

GRADING RESULTS

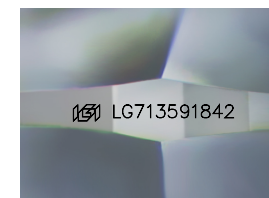
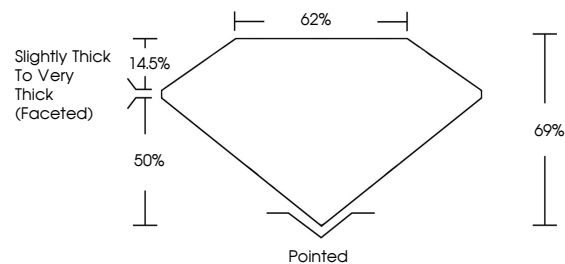
Carat Weight **3.52 CARATS**
Color Grade **LIGHT PINKISH BROWN**
Clarity Grade **VS 1**

ADDITIONAL GRADING INFORMATION

Polish **EXCELLENT**
Symmetry **EXCELLENT**
Fluorescence **SLIGHT**
Inscription(s) **IGI LG713591842**

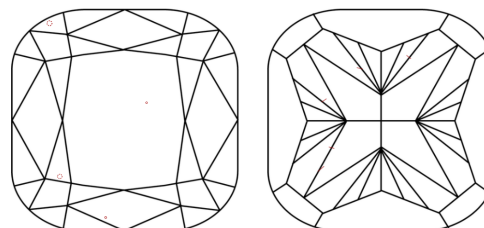
Comments: This Laboratory Grown Diamond was created by Chemical Vapor Deposition (CVD) growth process.
Indications of post-growth treatment.

PROPORTIONS



Sample Image Used

CLARITY CHARACTERISTICS



KEY TO SYMBOLS

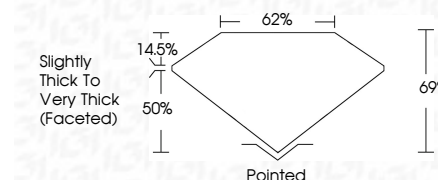
Red symbols indicate internal characteristics.
Green symbols indicate external characteristics.

COLOR

D E F G H I J Faint Very Light Light

CLARITY

IF	VS ¹⁻²	VS ¹⁻²	SI ¹⁻²	I ¹⁻³
Internally Flawless	Very Very Slightly Included	Very Slightly Included	Slightly Included	Included



ADDITIONAL GRADING INFORMATION

Polish **EXCELLENT**
Symmetry **EXCELLENT**
Fluorescence **SLIGHT**
Inscription(s) **IGI LG713591842**
Comments: This Laboratory Grown Diamond was created by Chemical Vapor Deposition (CVD) growth process.
Indications of post-growth treatment.



June 14, 2025
IGI Report No LG713591842
SQUARE CUSHION MODIFIED BRILLIANT
8.55 X 8.42 X 5.81 MM
3.52 CARATS
Color Grade **LIGHT PINKISH BROWN**
Clarity Grade **VS 1**
Depth **69%**
Table **62%**
Girdle **Slightly Thick To Very Thick (Faceted)**
Culet **Pointed**
Polish **EXCELLENT**
Symmetry **EXCELLENT**
Fluorescence **SLIGHT**
Inscription(s) **IGI LG713591842**

Comments: This Laboratory Grown Diamond was created by Chemical Vapor Deposition (CVD) growth process.
Indications of post-growth treatment.