



**ELECTRONIC COPY**

## LABORATORY GROWN DIAMOND REPORT

June 8, 2025	
IGI Report Number	LG713588553
Description	LABORATORY GROWN DIAMOND
Shape and Cutting Style	ROUND BRILLIANT
Measurements	8.19 - 8.23 X 5.04 MM

## GRADING RESULTS

Carat Weight	2.09 CARATS
Color Grade	E
Clarity Grade	VS 1
Cut Grade	EXCELLENT

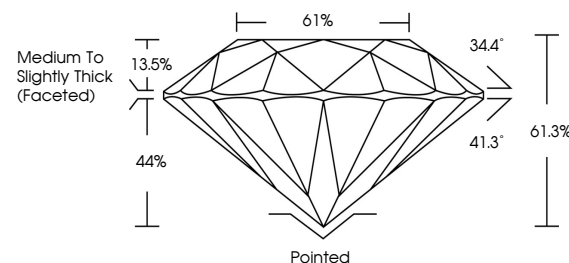
### ADDITIONAL GRADING INFORMATION

Polish	EXCELLENT
Symmetry	EXCELLENT
Fluorescence	NONE
Inscription(s)	15 LG713588553

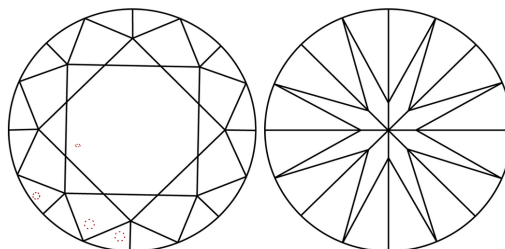
Comments: This Laboratory Grown Diamond was created by Chemical Vapor Deposition (CVD) growth process.  
Type IIa

LG713588553  
Report verification at [iqi.org](https://iqi.org)

## PROPORTIONS

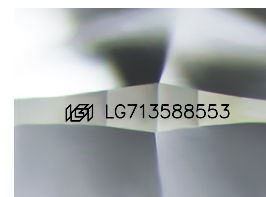


## CLARITY CHARACTERISTICS



## KEY TO SYMBOLS

Red symbols indicate internal characteristics.  
Green symbols indicate external characteristics.



Sample Image Used

## COLOR

D E F G H I J Faint Very Light Light

## CLARITY

IF                      WS<sup>1-2</sup>                      VS<sup>1-2</sup>                      SI<sup>1-2</sup>                      I<sup>1-3</sup>

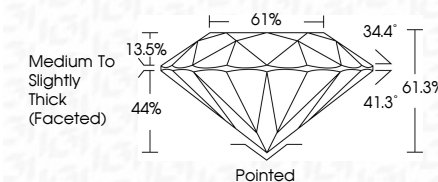
Internally Flawless	Very Very Slightly Included	Very Slightly Included	Slightly Included	Included
------------------------	--------------------------------	---------------------------	----------------------	----------



June 8, 2025	
IGI Report Number	LG713588553
Description	LABORATORY GROWN DIAMOND
Shape and Cutting Style	ROUND BRILLIANT
Measurements	8.19 - 8.23 X 5.04 MM

## GRADING RESULTS

Carat Weight	2.09 CARATS
Color Grade	E
Clarity Grade	VS 1
Cut Grade	EXCELLENT



### ADDITIONAL GRADING INFORMATION

Polish	EXCELLENT
Symmetry	EXCELLENT
Fluorescence	NONE
Inscription(s)	 LG713588553
Comments: This Laboratory Grown Diamond was created by Chemical Vapor Deposition (CVD) growth process. Type IIa	



© IGI 2020, International Gemological Institute

FD - 10 20



THIS DOCUMENT WAS PRODUCED WITH THE FOLLOWING SECURITY MEASURES: SPECIAL DOCUMENT PAPER, INK SCREENS, WATERMARK, BACKGROUND DESIGNS, HOLOGRAM AND OTHER SECURITY FEATURES NOT LISTED AND DO EXCEED DOCUMENT SECURITY INDUSTRY GUIDELINE

**www.igi.org**

