



**ELECTRONIC COPY**

LG713584972  
Report verification at igi.org



June 19, 2025

IGI Report Number **LG713584972**

Description **LABORATORY GROWN DIAMOND**

Shape and Cutting Style **ROUND BRILLIANT**

Measurements **9.25 - 9.30 X 5.77 MM**

**GRADING RESULTS**

Carat Weight **3.08 CARATS**

Color Grade **F**

Clarity Grade **VVS 2**

Cut Grade **IDEAL**

June 19, 2025  
IGI Report Number **LG713584972**  
Description **LABORATORY GROWN DIAMOND**  
Shape and Cutting Style **ROUND BRILLIANT**  
Measurements **9.25 - 9.30 X 5.77 MM**

**GRADING RESULTS**

Carat Weight **3.08 CARATS**

Color Grade **F**

Clarity Grade **VVS 2**

Cut Grade **IDEAL**

**ADDITIONAL GRADING INFORMATION**

Polish **EXCELLENT**

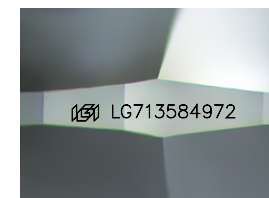
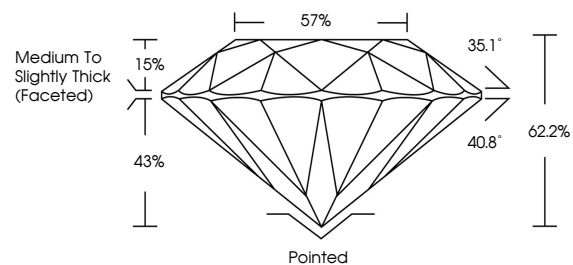
Symmetry **EXCELLENT**

Fluorescence **NONE**

Inscription(s) **LG713584972**

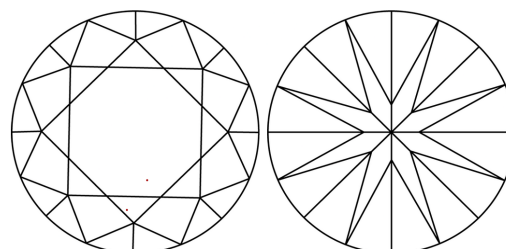
Comments: This Laboratory Grown Diamond was created by Chemical Vapor Deposition (CVD) growth process.  
Type IIa

**PROPORTIONS**



Sample Image Used

**CLARITY CHARACTERISTICS**



**KEY TO SYMBOLS**

Red symbols indicate internal characteristics.  
Green symbols indicate external characteristics.

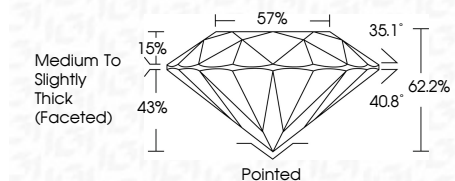
**COLOR**

D E F G H I J Faint Very Light Light

**CLARITY**

IF VS<sup>1-2</sup> VS<sup>1-2</sup> SI<sup>1-2</sup> I<sup>1-3</sup>

Internally Flawless Very Very Slightly Included Very Slightly Included Slightly Included Included



**ADDITIONAL GRADING INFORMATION**

Polish **EXCELLENT**

Symmetry **EXCELLENT**

Fluorescence **NONE**

Inscription(s) **LG713584972**

Comments: This Laboratory Grown Diamond was created by Chemical Vapor Deposition (CVD) growth process.  
Type IIa



**IGI**



|  |                           |                       |             |               |           |       |       |                                    |         |           |           |              |                |
|--|---------------------------|-----------------------|-------------|---------------|-----------|-------|-------|------------------------------------|---------|-----------|-----------|--------------|----------------|
| June 19, 2025  | IGI Report No LG713584972 | 3.08 CARATS           | F           | VVS 2         | IDEAL     | 62.2% | 57%   | Medium To Slightly Thick (Faceted) | Pointed | EXCELLENT | EXCELLENT | NONE         | LG713584972    |
| IGI Report No LG713584972  | ROUND BRILLIANT           | 9.25 - 9.30 X 5.77 MM | Color Grade | Clarity Grade | Cut Grade | Depth | Table | Grade                              | Culet   | Polish    | Symmetry  | Fluorescence | Inscription(s) |
| <p>Comments: This Laboratory Grown Diamond was created by Chemical Vapor Deposition (CVD) growth process.<br/>Type IIa</p> |                           |                       |             |               |           |       |       |                                    |         |           |           |              |                |