



ELECTRONIC COPY

LG713578761 Report verification at igi.org



June 27, 2025
IGI Report Number LG713578761
Description LABORATORY GROWN DIAMOND
Shape and Cutting Style CUSHION MODIFIED BRILLIANT
Measurements 7.31 X 5.38 X 3.44 MM
GRADING RESULTS
Carat Weight 1.14 CARAT
Color Grade FANCY INTENSE PINK
Clarity Grade VVS 2

LABORATORY GROWN DIAMOND REPORT

June 27, 2025
IGI Report Number LG713578761
Description LABORATORY GROWN DIAMOND
Shape and Cutting Style CUSHION MODIFIED BRILLIANT
Measurements 7.31 X 5.38 X 3.44 MM

GRADING RESULTS

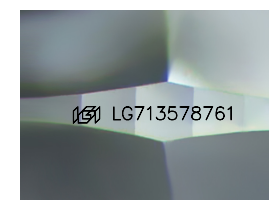
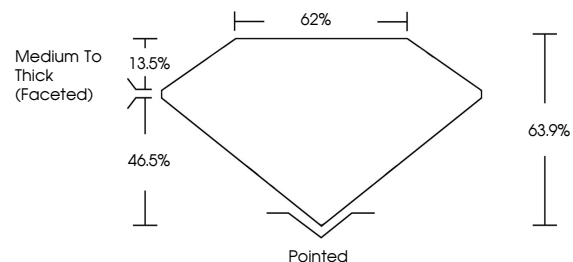
Carat Weight 1.14 CARAT
Color Grade FANCY INTENSE PINK
Clarity Grade VVS 2

ADDITIONAL GRADING INFORMATION

Polish EXCELLENT
Symmetry EXCELLENT
Fluorescence STRONG
Inscription(s) IGI LG713578761

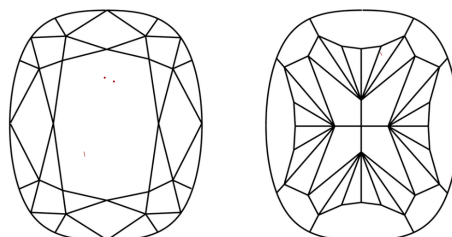
Comments: This Laboratory Grown Diamond was created by Chemical Vapor Deposition (CVD) growth process. Indications of post-growth treatment.

PROPORTIONS



Sample Image Used

CLARITY CHARACTERISTICS



KEY TO SYMBOLS

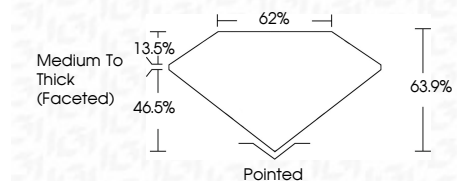
Red symbols indicate internal characteristics. Green symbols indicate external characteristics.

COLOR

D E F G H I J Faint Very Light Light

CLARITY

IF VS 1-2 VS 1-2 SI 1-2 I 1-3
Internally Flawless Very Very Slightly Included Very Slightly Included Slightly Included Included



ADDITIONAL GRADING INFORMATION

Polish EXCELLENT
Symmetry EXCELLENT
Fluorescence STRONG
Inscription(s) IGI LG713578761
Comments: This Laboratory Grown Diamond was created by Chemical Vapor Deposition (CVD) growth process. Indications of post-growth treatment.



June 27, 2025
IGI Report No LG713578761
CUSHION MODIFIED BRILLIANT
1.14 CARAT
FANCY INTENSE PINK
VVS 2
63.9%
62%
Medium To Thick (Faceted)
Pointed
EXCELLENT
EXCELLENT
STRONG
IGI LG713578761
Comments: This Laboratory Grown Diamond was created by Chemical Vapor Deposition (CVD) growth process. Indications of post-growth treatment.