



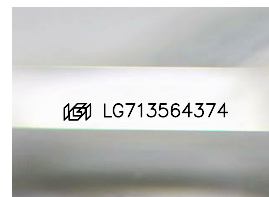
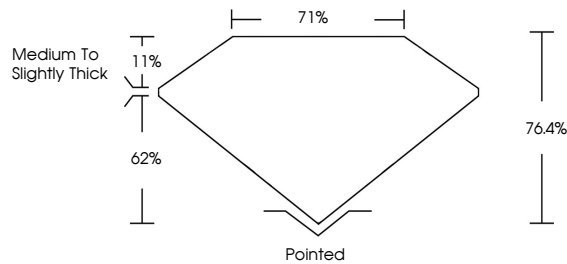
**INTERNATIONAL
GEMOLOGICAL
INSTITUTE**

ELECTRONIC COPY

LABORATORY GROWN DIAMOND REPORT

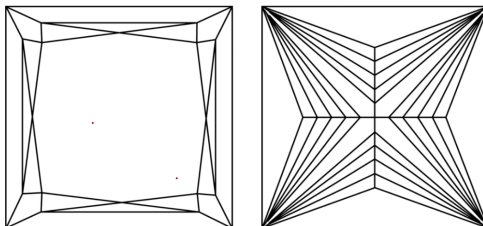
LG713564374
Report verification at [igi.org](https://www.igi.org)

PROPORTIONS



Sample Image Used

CLARITY CHARACTERISTICS



KEY TO SYMBOLS

Red symbols indicate internal characteristics.
Green symbols indicate external characteristics.

COLOR

D E F G H I J Faint Very Light Light

CLARITY

IF WS¹⁻² VS¹⁻² SI¹⁻² I¹⁻³

Internally Flawless	Very Very Slightly Included	Very Slightly Included	Slightly Included	Included
------------------------	--------------------------------	---------------------------	----------------------	----------



© IGI 2020, International Gemological Institute

FD - 10 20

www.igi.org

THIS DOCUMENT WAS PRODUCED WITH THE FOLLOWING SECURITY MEASURES: SPECIAL DOCUMENT PAPER, INK SCREENS, WATERMARK, BACKGROUND DESIGNS, HOLOGRAM AND OTHER SECURITY FEATURES NOT LISTED AND DO EXCEED DOCUMENT SECURITY INDUSTRY GUIDELINES

LABORATORY GROWN DIAMOND REPORT



July 31, 2025

IGI Report Number **LG713564374**

Description	LABORATORY GROWN DIAMOND
-------------	--------------------------

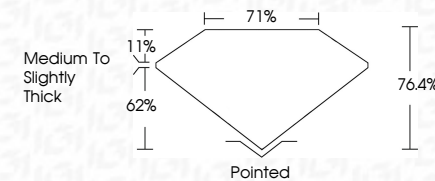
Shape and Cutting Style **PRINCESS CUT**

Measurements 6.92 X 6.69 X 5.11 MM

GRADING RESULTS

Carat Weight **2.04 CARATS**

Color Grade	F
-------------	---

Clarity Grade **VVS 1**

ADDITIONAL GRADING INFORMATION

Polish **EXCELLENT**Symmetry **EXCELLENT**Fluorescence **NONE**Inscription(s) LG71356437

Comments: This Laboratory Grown Diamond was created by Chemical Vapor Deposition (CVD) growth process.
Type IIa



IG

July 31, 2025
IGI Report No LG713564374
PRINCESS CUT

6.92 X 6.69 X 6.11 MM		2.04 CARATS
Carat Weight	VVS 1	F
Color Grade	76.4%	
Clarity Grade	71%	
Depth	Medium To Slightly Thick	
Table		
Girdle		
Culet		
Polish	Pointed	
Symmetry	EXCELLENT	
Fluorescence	EXCELLENT	
Reported by	NONE	
Reported on	4mm 127195646974	

Comments:
This Laboratory Grown Diamond was created by Chemical Vapor Deposition (CVD) growth process.