



ELECTRONIC COPY

LG713561791
Report verification at igi.org



July 16, 2025

IGI Report Number **LG713561791**

Description **LABORATORY GROWN DIAMOND**

Shape and Cutting Style **ROUND BRILLIANT**

Measurements **6.92 - 6.95 X 4.25 MM**

GRADING RESULTS

Carat Weight **1.25 CARAT**

Color Grade **FANCY VIVID BLUE**

Clarity Grade **VS 1**

Cut Grade **IDEAL**

July 16, 2025

IGI Report Number **LG713561791**

Description **LABORATORY GROWN DIAMOND**

Shape and Cutting Style **ROUND BRILLIANT**

Measurements **6.92 - 6.95 X 4.25 MM**

GRADING RESULTS

Carat Weight **1.25 CARAT**

Color Grade **FANCY VIVID BLUE**

Clarity Grade **VS 1**

Cut Grade **IDEAL**

ADDITIONAL GRADING INFORMATION

Polish **EXCELLENT**

Symmetry **EXCELLENT**

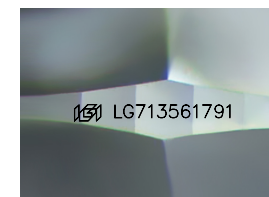
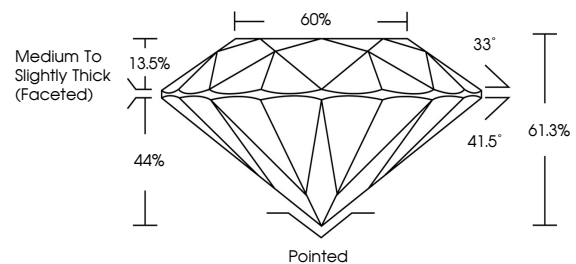
Fluorescence **NONE**

Inscription(s) **LG713561791**

Comments: This Laboratory Grown Diamond was created by Chemical Vapor Deposition (CVD) growth process.

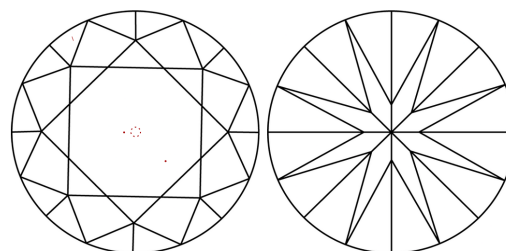
Indications of post-growth treatment.

PROPORTIONS



Sample Image Used

CLARITY CHARACTERISTICS



KEY TO SYMBOLS

Red symbols indicate internal characteristics.
Green symbols indicate external characteristics.

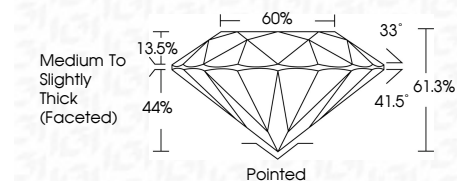
COLOR

D E F G H I J Faint Very Light Light

CLARITY

IF VS¹⁻² VS¹⁻² SI¹⁻² I¹⁻³

Internally Flawless Very Very Slightly Included Very Slightly Included Slightly Included Included



ADDITIONAL GRADING INFORMATION

Polish **EXCELLENT**

Symmetry **EXCELLENT**

Fluorescence **NONE**

Inscription(s) **LG713561791**

Comments: This Laboratory Grown Diamond was created by Chemical Vapor Deposition (CVD) growth process.

Indications of post-growth treatment.



July 16, 2025	1.25 CARAT	VS 1	60%	Pointed
IGI Report No LG713561791	6.92 - 6.95 X 4.25 MM	IDEAL	61.3%	EXCELLENT
ROUND BRILLIANT	FANCY VIVID BLUE	IDEAL	Medium To Slightly Thick (Faceted)	EXCELLENT
Carat Weight				NONE
Color Grade				IGI LG713561791
Clarity Grade				
Depth				
Table				
Grade				
Culet				
Polish				
Symmetry				
Fluorescence				
Inscription(s)				

Comments: This Laboratory Grown Diamond was created by Chemical Vapor Deposition (CVD) growth process. Indications of post-growth treatment.