



ELECTRONIC COPY

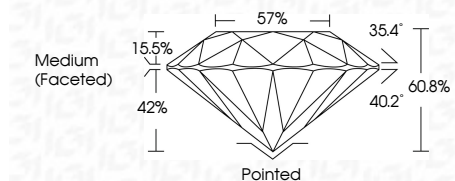
LG713558620
Report verification at igi.org



July 29, 2025
IGI Report Number **LG713558620**
Description **LABORATORY GROWN DIAMOND**
Shape and Cutting Style **ROUND BRILLIANT**
Measurements **8.73 - 8.78 X 5.32 MM**

GRADING RESULTS

Carat Weight **2.50 CARATS**
Color Grade **G**
Clarity Grade **VVS 1**
Cut Grade **IDEAL**

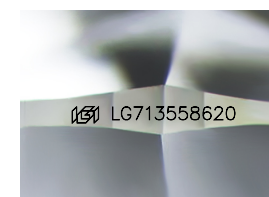


ADDITIONAL GRADING INFORMATION

Polish **EXCELLENT**
Symmetry **EXCELLENT**
Fluorescence **NONE**
Inscription(s) **(IGI) LG713558620**
Comments: This Laboratory Grown Diamond was created by High Pressure High Temperature (HPHT) growth process.
Type II

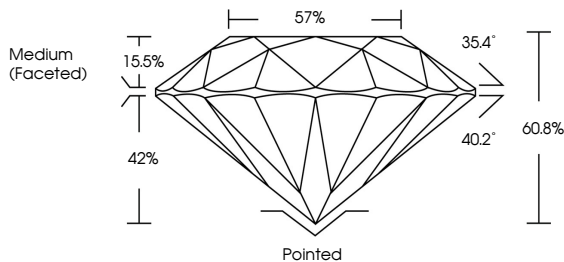


July 29, 2025
IGI Report No LG713558620
ROUND BRILLIANT
8.73 - 8.78 X 5.32 MM
2.50 CARATS
Color Grade **G**
Clarity Grade **VVS 1**
Cut Grade **IDEAL**
Depth **60.8%**
Table **57%**
Medium (Faceted)
Culet **Pointed**
Polish **EXCELLENT**
Symmetry **EXCELLENT**
Fluorescence **NONE**
Inscription(s) **(IGI) LG713558620**
Comments: This Laboratory Grown Diamond was created by High Pressure High Temperature (HPHT) growth process.
Type II

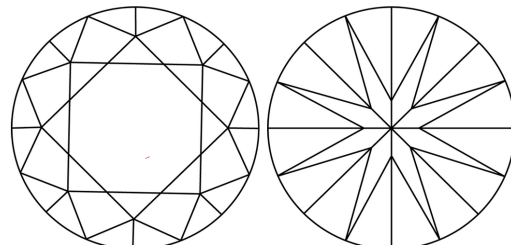


Sample Image Used

PROPORTIONS



CLARITY CHARACTERISTICS



KEY TO SYMBOLS

Red symbols indicate internal characteristics.
Green symbols indicate external characteristics.

COLOR

D	E	F	G	H	I	J	Faint	Very Light	Light
---	---	---	---	---	---	---	-------	------------	-------

CLARITY

IF	VVS ¹⁻²	VS ¹⁻²	SI ¹⁻²	I ¹⁻³
Internally Flawless	Very Very Slightly Included	Very Slightly Included	Slightly Included	Included

