



ELECTRONIC COPY

LABORATORY GROWN DIAMOND REPORT

June 8, 2025	
IGI Report Number	LG713555115
Description	LABORATORY GROWN DIAMOND
Shape and Cutting Style	ROUND BRILLIANT
Measurements	8.22 - 8.25 X 5.02 MM

GRADING RESULTS

Carat Weight	2.08 CARATS
Color Grade	E
Clarity Grade	VS 1
Cut Grade	IDEAL

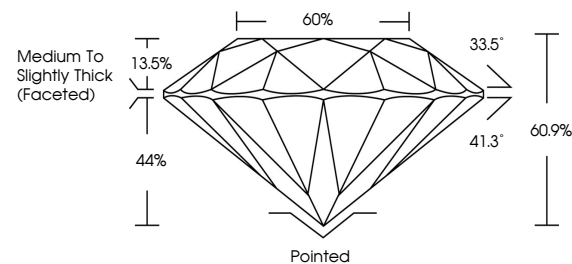
ADDITIONAL GRADING INFORMATION

Polish	EXCELLENT
Symmetry	EXCELLENT
Fluorescence	NONE
Inscription(s)	 LG713555115

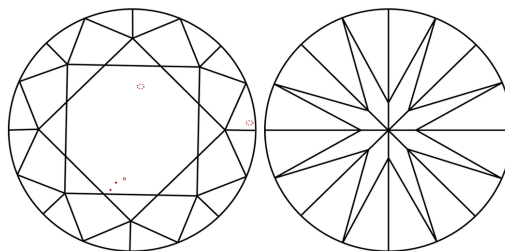
Comments: This Laboratory Grown Diamond was created by Chemical Vapor Deposition (CVD) growth process.
Type IIa

LG713555115
Report verification at igi.org

PROPORTIONS



CLARITY CHARACTERISTICS



KEY TO SYMBOLS

Red symbols indicate internal characteristics.
Green symbols indicate external characteristics.



Sample Image Used

COLOR

D E F G H I J Faint Very Light Light

CLARITY

IF WS¹⁻² VS¹⁻² SI¹⁻² |¹⁻³

Internally Flawless	Very Very Slightly Included	Very Slightly Included	Slightly Included	Included
------------------------	--------------------------------	---------------------------	----------------------	----------

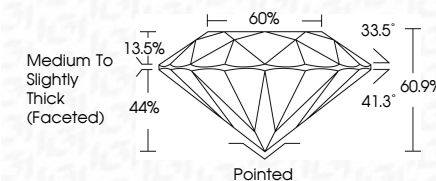
LABORATORY GROWN DIAMOND REPORT




June 8, 2025	
IGI Report Number	LG713555115
Description	LABORATORY GROWN DIAMOND
Shape and Cutting Style	ROUND BRILLIANT
Measurements	8.22 - 8.25 X 5.02 MM

GRADING RESULTS

Carat Weight	2.08 CARATS
Color Grade	E
Clarity Grade	VS 1
Cut Grade	IDEAL



ADDITIONAL GRADING INFORMATION

Polish	EXCELLENT
Symmetry	EXCELLENT
Fluorescence	NONE
Inscription(s)	 LG713555115
Comments: This Laboratory Grown Diamond was created by Chemical Vapor Deposition (CVD) growth process.	
Type IIa	



IG



© IGI 2020, International Gemological Institute

FD - 10 20

www.igi.org



THIS DOCUMENT WAS PRODUCED WITH THE FOLLOWING SECURITY MEASURES: SPECIAL DOCUMENT PAPER, INK SCREENS, WATERMARK, BACKGROUND DESIGNS, HOLOGRAM AND OTHER SECURITY FEATURES NOT LISTED AND DO EXCEED DOCUMENT SECURITY INDUSTRY GUIDELINE

June 8, 2025	GI Report No. LG713555115	218 CARATS	E	VS1	IDEAL	60.1%	60%	Medium to Slightly Thick (Faceted)	Polished	EXCELLENT	EXCELLENT	NONE	1691 LG713555115
ROUND BRILLIANT		22.22 - 8.25 X 5.02 MM	Color Grade	Clarity Grade	Depth	Table	Girdle		Culet	Polish	Symmetry	Fluorescence	Inscriptions(s)
		Carat Weight	Carat Weight	Carat Weight	Carat Weight	Carat Weight	Carat Weight	Carat Weight	Carat Weight	Carat Weight	Carat Weight	Carat Weight	Carat Weight

Comments:
 Created by: Gemmy Diamond was
 treated by Chemical Vapor Deposition
 (CVD) growth process.
 Type IIG