



ELECTRONIC COPY

LG713554262
Report verification at igi.org



June 13, 2025
IGI Report Number LG713554262
Description LABORATORY GROWN DIAMOND
Shape and Cutting Style ROUND BRILLIANT
Measurements 7.41 - 7.44 X 4.54 MM
GRADING RESULTS
Carat Weight 1.52 CARAT
Color Grade FANCY VIVID BLUE
Clarity Grade VVS 1
Cut Grade IDEAL

June 13, 2025
IGI Report Number LG713554262
Description LABORATORY GROWN DIAMOND
Shape and Cutting Style ROUND BRILLIANT
Measurements 7.41 - 7.44 X 4.54 MM

GRADING RESULTS

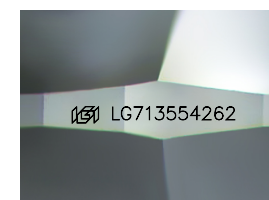
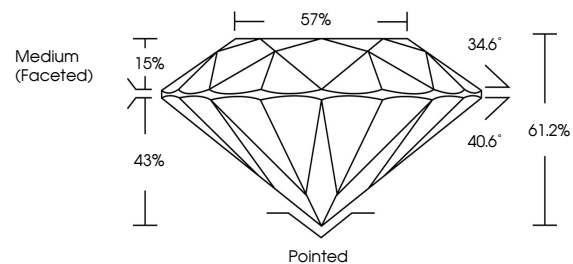
Carat Weight 1.52 CARAT
Color Grade FANCY VIVID BLUE
Clarity Grade VVS 1
Cut Grade IDEAL

ADDITIONAL GRADING INFORMATION

Polish EXCELLENT
Symmetry EXCELLENT
Fluorescence NONE
Inscription(s) IGI LG713554262

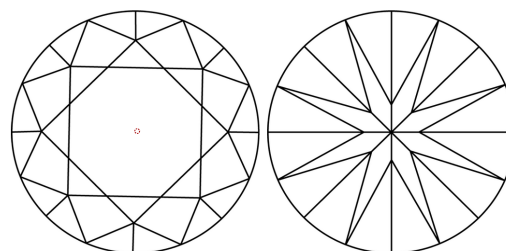
Comments: This Laboratory Grown Diamond was created by High Pressure High Temperature (HPHT) growth process. Indications of post-growth treatment.

PROPORTIONS



Sample Image Used

CLARITY CHARACTERISTICS



KEY TO SYMBOLS

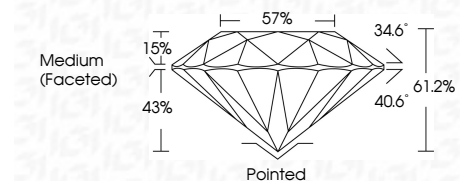
Red symbols indicate internal characteristics.
Green symbols indicate external characteristics.

COLOR

D E F G H I J Faint Very Light Light

CLARITY

IF VVS 1-2 VS 1-2 SI 1-2 I 1-3
Internally Flawless Very Very Slightly Included Very Slightly Included Slightly Included Included



ADDITIONAL GRADING INFORMATION

Polish EXCELLENT
Symmetry EXCELLENT
Fluorescence NONE
Inscription(s) IGI LG713554262
Comments: This Laboratory Grown Diamond was created by High Pressure High Temperature (HPHT) growth process. Indications of post-growth treatment.



Summary table of report details including date, report number, description, measurements, grading results, and additional information.