



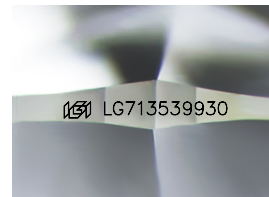
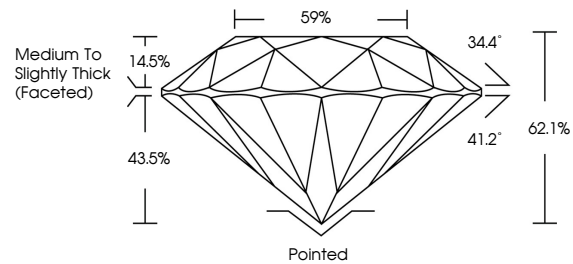
**INTERNATIONAL
GEMOLOGICAL
INSTITUTE**

ELECTRONIC COPY

LABORATORY GROWN DIAMOND REPORT

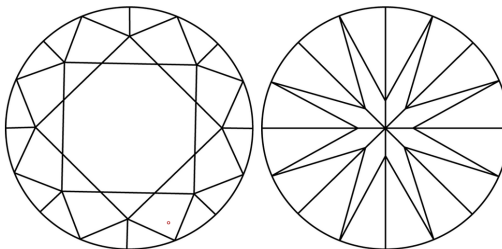
LG713539930
Report verification at igi.org

PROPORTIONS



Sample Image Used

CLARITY CHARACTERISTICS



KEY TO SYMBOLS

Red symbols indicate internal characteristics.
Green symbols indicate external characteristics.

COLOR

D E F G H I J Faint Very Light Light

CLARITY

IF WS¹⁻² VS¹⁻² SI¹⁻² |¹⁻³

Internally Flawless	Very Very Slightly Included	Very Slightly Included	Slightly Included	Included
------------------------	--------------------------------	---------------------------	----------------------	----------



© IGI 2020, International Gemological Institute

FD - 10 20

www.igi.org

LABORATORY GROWN DIAMOND REPORT



June 5, 2025

IGI Report Number **LG713539930**

Description	LABORATORY GROWN DIAMOND
-------------	--------------------------

Shape and Cutting Style **ROUND BRILLIANT**

Measurements 6.55 - 6.59 X 4.08 MM

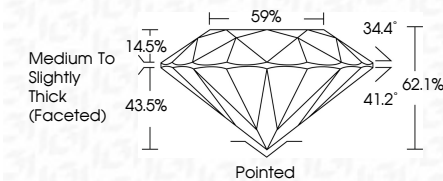
GRADING RESULTS

Carat Weight **1.10 CARAT**

Color Grade **D**

Clarity Grade VS 1

Cut Grade **EXCELLENT**



ADDITIONAL GRADING INFORMATION

Polish **EXCELLENT**Symmetry **EXCELLENT**Fluorescence **NONE**Inscription(s) LG71353993

Comments: This Laboratory Grown Diamond was created by Chemical Vapor Deposition (CVD) growth process.
Type IIa



IG

June 5, 2025	IGI Report No LG713539930	ROUND BRILLIANT	6.58 - 6.59 X 4.08 MM	Color Grade	Vs1	1.10 CARAT
Cut	Carat Weight	Clarity Grade	Depth	Table	Excellent	
Girdle	Color Grade	Cut Grade	Grain	Medium to Slightly Thick Faceted	62.1%	
Polex	Symmetry	Inclusions(s)	Culet	Pointed	EXCELLENT	
Fluorescence	None	#681LG713539930	Fluorescence	EXCELLENT	NONE	
Comments:	This Laboratory Grown Diamond was created by Chemical Vapor Deposition (CVD) growth process.					
Type Iia						