



ELECTRONIC COPY

LG713537332
Report verification at igi.org



July 14, 2025
IGI Report Number **LG713537332**
Description **LABORATORY GROWN DIAMOND**
Shape and Cutting Style **SQUARE CUSHION MODIFIED BRILLIANT**
Measurements **10.82 X 10.79 X 7.62 MM**
GRADING RESULTS
Carat Weight **8.61 CARATS**
Color Grade **FANCY INTENSE GREEN**
Clarity Grade **VS 1**

LABORATORY GROWN DIAMOND REPORT

July 14, 2025
IGI Report Number **LG713537332**
Description **LABORATORY GROWN DIAMOND**
Shape and Cutting Style **SQUARE CUSHION MODIFIED BRILLIANT**
Measurements **10.82 X 10.79 X 7.62 MM**

GRADING RESULTS

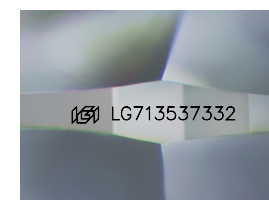
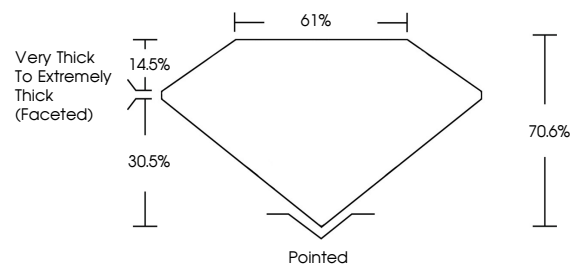
Carat Weight **8.61 CARATS**
Color Grade **FANCY INTENSE GREEN**
Clarity Grade **VS 1**

ADDITIONAL GRADING INFORMATION

Polish **VERY GOOD**
Symmetry **EXCELLENT**
Fluorescence **NONE**
Inscription(s) **IGI LG713537332**

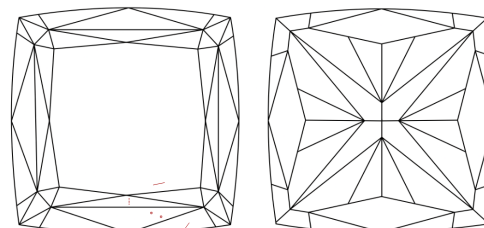
Comments: This Laboratory Grown Diamond was created by Chemical Vapor Deposition (CVD) growth process. Indications of post-growth treatment.

PROPORTIONS



Sample Image Used

CLARITY CHARACTERISTICS



KEY TO SYMBOLS

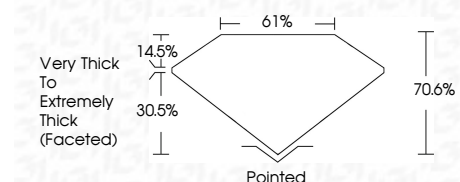
Red symbols indicate internal characteristics.
Green symbols indicate external characteristics.

COLOR

D E F G H I J Faint Very Light Light

CLARITY

IF	VS ¹⁻²	VS ¹⁻²	SI ¹⁻²	I ¹⁻³
Internally Flawless	Very Very Slightly Included	Very Slightly Included	Slightly Included	Included



ADDITIONAL GRADING INFORMATION

Polish **VERY GOOD**
Symmetry **EXCELLENT**
Fluorescence **NONE**
Inscription(s) **IGI LG713537332**
Comments: This Laboratory Grown Diamond was created by Chemical Vapor Deposition (CVD) growth process. Indications of post-growth treatment.



July 14, 2025
IGI Report No LG713537332
SQUARE CUSHION MODIFIED BRILLIANT
8.61 CARATS
FANCY INTENSE GREEN
VS 1
70.6%
61%
Very Thick to Extremely Thick (Faceted)
Pointed
Polish **VERY GOOD**
Symmetry **EXCELLENT**
Fluorescence **NONE**
Inscription(s) **IGI LG713537332**
Comments: This Laboratory Grown Diamond was created by Chemical Vapor Deposition (CVD) growth process. Indications of post-growth treatment.