

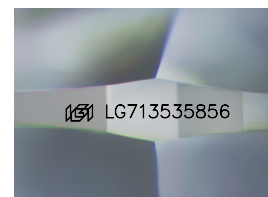
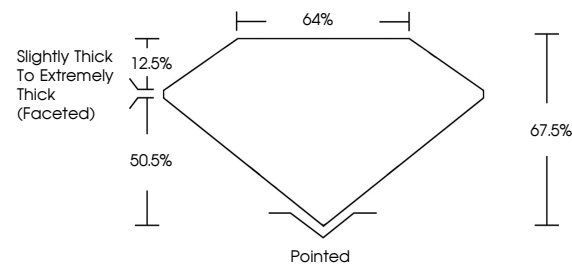


ELECTRONIC COPY

LABORATORY GROWN DIAMOND REPORT

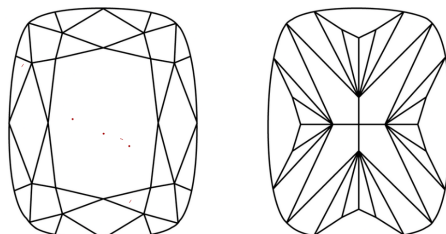
LG713535856
Report verification at igi.org

PROPORTIONS



Sample Image Used

CLARITY CHARACTERISTICS



KEY TO SYMBOLS

Red symbols indicate internal characteristics.
Green symbols indicate external characteristics.

COLOR

D E F G H I J Faint Very Light Light

CLARITY

IF WS¹⁻² VS¹⁻² SI¹⁻² |¹⁻³

Internally Flawless	Very Very Slightly Included	Very Slightly Included	Slightly Included	Included
------------------------	--------------------------------	---------------------------	----------------------	----------

LABORATORY GROWN DIAMOND REPORT



June 16, 2025

IGI Report Number **LG713535856**

Description	LABORATORY GROWN DIAMOND
-------------	--------------------------

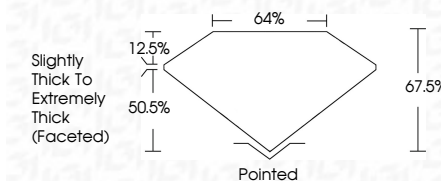
Shape and Cutting Style **CUSHION MODIFIED
BRILLIANT**

Measurements 13.27 X 10.06 X 6.79 MM

GRADING RESULTS

Carat Weight **7.03 CARATS**

Color Grade F

Clarity Grade **VVS 2**

ADDITIONAL GRADING INFORMATION

Polish **EXCELLENT**Symmetry **EXCELLENT**Fluorescence **NONE**Inscription(s) LG713535856

Comments: This Laboratory Grown Diamond was created by Chemical Vapor Deposition (CVD) growth process.
Type IIa



© IGI 2020, International Gemological Institute

FD - 10 20



THIS DOCUMENT WAS PRODUCED WITH THE FOLLOWING SECURITY MEASURES: SPECIAL DOCUMENT PAPER, INK SCREENS, WATERMARK, BACKGROUND DESIGNS, HOLOGRAM, AND OTHER SECURITY FEATURES NOT LISTED AND DO EXCEED DOCUMENT SECURITY INDUSTRY GUIDELINES.

www.igi.org



June 14, 2026	GI Report No LG713539565	
CUSHION MODIFIED BRILLIANT		
13.32 x 10.06 x 6.79 MM		
Color Weight	7.03 CARATS	
Color Grade	F	
Clarity Grade	VVS 2	
Depth	67.5%	
Table	64%	
Girdle	Slightly Thick to Extremely Thick (peaked)	
Polish	Polished	
Symmetry	EXCELLENT	
Fluorescence	EXCELLENT	
Inscriptions(s)	NONE	
	IGI LG713539565	
Comments:		
	Laboratory Grown Diamond was created by Chemical Vapor Deposition (CVD) growth process.	
	type IIA	