



ELECTRONIC COPY

LG713535439
Report verification at igi.org



June 14, 2025

IGI Report Number **LG713535439**

Description **LABORATORY GROWN DIAMOND**

Shape and Cutting Style **BAGUETTE**

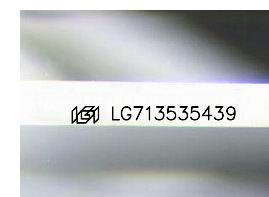
Measurements **9.57 X 4.67 X 3.22 MM**

GRADING RESULTS

Carat Weight **1.66 CARAT**

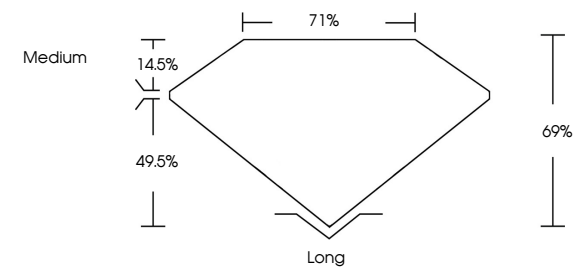
Color Grade **D**

Clarity Grade **VVS 1**

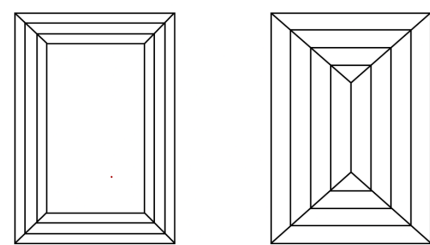


Sample Image Used

PROPORTIONS



CLARITY CHARACTERISTICS



KEY TO SYMBOLS

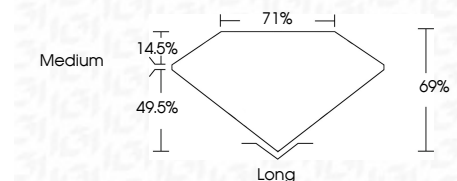
Red symbols indicate internal characteristics.
Green symbols indicate external characteristics.

COLOR

D	E	F	G	H	I	J	Faint	Very Light	Light
---	---	---	---	---	---	---	-------	------------	-------

CLARITY

IF	VS ¹⁻²	VS ¹⁻²	SI ¹⁻²	I ¹⁻³
Internally Flawless	Very Very Slightly Included	Very Slightly Included	Slightly Included	Included



ADDITIONAL GRADING INFORMATION

Polish **EXCELLENT**

Symmetry **EXCELLENT**

Fluorescence **NONE**

Inscription(s) **IGI LG713535439**

Comments: This Laboratory Grown Diamond was created by Chemical Vapor Deposition (CVD) growth process. Type IIa



June 14, 2025
IGI Report No LG713535439

BAGUETTE

9.57 X 4.67 X 3.22 MM

Carat Weight **1.66 CARAT**

Color Grade **D**

Clarity Grade **VVS 1**

Depth **69%**

Table **71%**

Grailes **Medium**

Culet **Long**

Polish **EXCELLENT**

Symmetry **EXCELLENT**

Fluorescence **NONE**

Inscription(s) **IGI LG713535439**

Comments: This Laboratory Grown Diamond was created by Chemical Vapor Deposition (CVD) growth process. Type IIa