



ELECTRONIC COPY

LG713529445
Report verification at igi.org



July 15, 2025
IGI Report Number **LG713529445**
Description **LABORATORY GROWN DIAMOND**
Shape and Cutting Style **CUSHION BRILLIANT**
Measurements **8.15 X 6.58 X 4.53 MM**
GRADING RESULTS
Carat Weight **2.01 CARATS**
Color Grade **FANCY INTENSE YELLOW**
Clarity Grade **VS 1**

LABORATORY GROWN DIAMOND REPORT

July 15, 2025
IGI Report Number **LG713529445**
Description **LABORATORY GROWN DIAMOND**
Shape and Cutting Style **CUSHION BRILLIANT**
Measurements **8.15 X 6.58 X 4.53 MM**

GRADING RESULTS

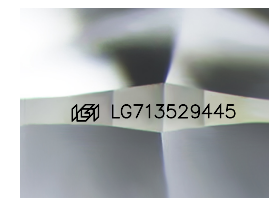
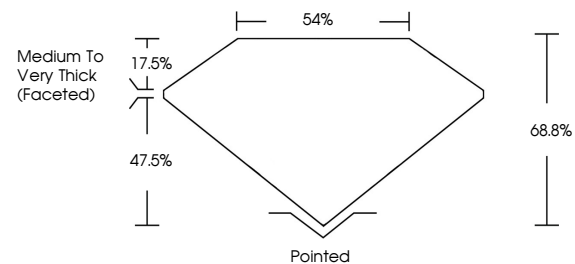
Carat Weight **2.01 CARATS**
Color Grade **FANCY INTENSE YELLOW**
Clarity Grade **VS 1**

ADDITIONAL GRADING INFORMATION

Polish **EXCELLENT**
Symmetry **EXCELLENT**
Fluorescence **NONE**
Inscription(s) **IGI LG713529445**

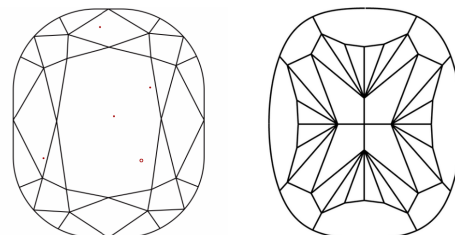
Comments: This Laboratory Grown Diamond was created by Chemical Vapor Deposition (CVD) growth process. Indications of post-growth treatment.

PROPORTIONS



Sample Image Used

CLARITY CHARACTERISTICS



KEY TO SYMBOLS

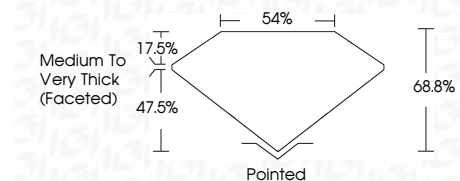
Red symbols indicate internal characteristics.
Green symbols indicate external characteristics.

COLOR

D E F G H I J Faint Very Light Light

CLARITY

IF	WS ¹⁻²	VS ¹⁻²	SI ¹⁻²	I ¹⁻³
Internally Flawless	Very Very Slightly Included	Very Slightly Included	Slightly Included	Included



ADDITIONAL GRADING INFORMATION

Polish **EXCELLENT**
Symmetry **EXCELLENT**
Fluorescence **NONE**
Inscription(s) **IGI LG713529445**
Comments: This Laboratory Grown Diamond was created by Chemical Vapor Deposition (CVD) growth process. Indications of post-growth treatment.



IGI



July 15, 2025
IGI Report No LG713529445
CUSHION BRILLIANT
8.15 X 6.58 X 4.53 MM
Carat Weight **2.01 CARATS**
Color Grade **FANCY INTENSE YELLOW**
Clarity Grade **VS 1**
Depth **68.8%**
Table **47.5%**
Girdle **Medium to Very Thick (Faceted)**
Culet **Pointed**
Polish **EXCELLENT**
Symmetry **EXCELLENT**
Fluorescence **NONE**
Inscription(s) **IGI LG713529445**

Comments: This Laboratory Grown Diamond was created by Chemical Vapor Deposition (CVD) growth process. Indications of post-growth treatment.