



ELECTRONIC COPY

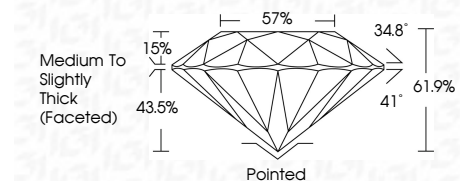
LG713528781
Report verification at igi.org



June 12, 2025
IGI Report Number LG713528781
Description LABORATORY GROWN DIAMOND
Shape and Cutting Style ROUND BRILLIANT
Measurements 11.00 - 11.04 X 6.82 MM

GRADING RESULTS

Carat Weight 5.09 CARATS
Color Grade E
Clarity Grade VVS 2
Cut Grade IDEAL



ADDITIONAL GRADING INFORMATION

Polish EXCELLENT
Symmetry EXCELLENT
Fluorescence NONE
Inscription(s) IGI LG713528781
Comments: This Laboratory Grown Diamond was created by Chemical Vapor Deposition (CVD) growth process. Type IIa



June 12, 2025
IGI Report No LG713528781
ROUND BRILLIANT
11.00 - 11.04 X 6.82 MM
5.09 CARATS
E
VVS 2
IDEAL
61.9%
57%
Medium To Slightly Thick (Faceted)
Pointed
EXCELLENT
EXCELLENT
NONE
IGI LG713528781
Comments: This Laboratory Grown Diamond was created by Chemical Vapor Deposition (CVD) growth process. Type IIa

June 12, 2025
IGI Report Number LG713528781
Description LABORATORY GROWN DIAMOND
Shape and Cutting Style ROUND BRILLIANT
Measurements 11.00 - 11.04 X 6.82 MM

GRADING RESULTS

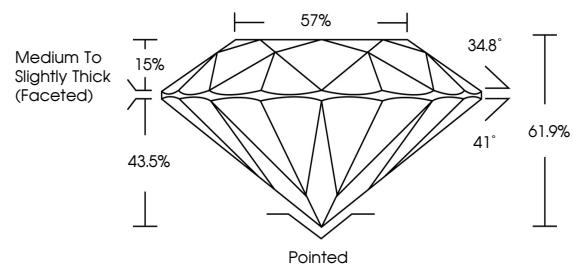
Carat Weight 5.09 CARATS
Color Grade E
Clarity Grade VVS 2
Cut Grade IDEAL

ADDITIONAL GRADING INFORMATION

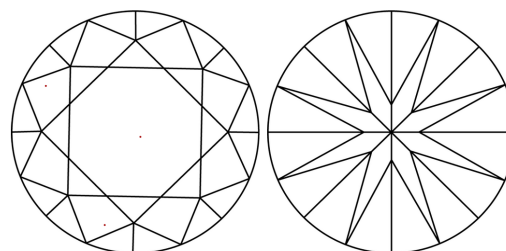
Polish EXCELLENT
Symmetry EXCELLENT
Fluorescence NONE
Inscription(s) IGI LG713528781

Comments: This Laboratory Grown Diamond was created by Chemical Vapor Deposition (CVD) growth process. Type IIa

PROPORTIONS

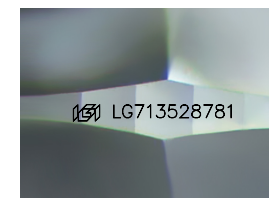


CLARITY CHARACTERISTICS



KEY TO SYMBOLS

Red symbols indicate internal characteristics.
Green symbols indicate external characteristics.



Sample Image Used

COLOR

D E F G H I J Faint Very Light Light

CLARITY

IF WS 1-2 VS 1-2 SI 1-2 I 1-3

Internally Flawless Very Very Slightly Included Very Slightly Included Slightly Included Included

