

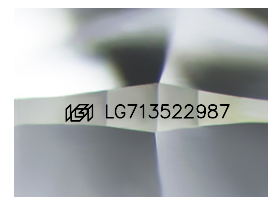
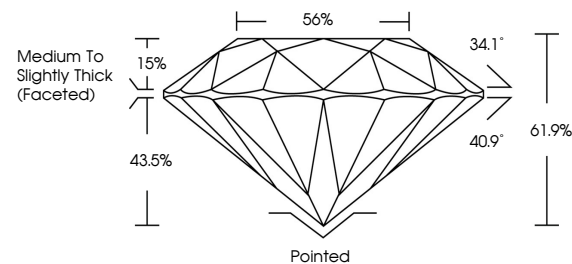


**ELECTRONIC COPY**

## LABORATORY GROWN DIAMOND REPORT

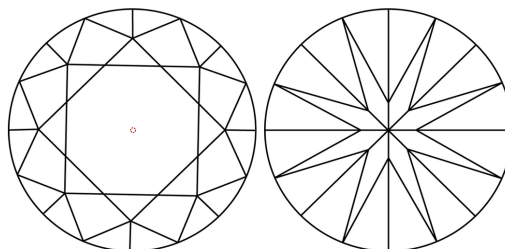
LG713522987  
Report verification at [igi.org](https://igi.org)

## PROPORTIONS



Sample Image Used

## CLARITY CHARACTERISTICS



## KEY TO SYMBOLS

Red symbols indicate internal characteristics.  
Green symbols indicate external characteristics.



**www.igi.org**

## LABORATORY GROWN DIAMOND REPORT



June 5, 2025

IGI Report Number **LG713522987**

Description	LABORATORY GROWN DIAMOND
-------------	--------------------------

Shape and Cutting Style **ROUND BRILLIANT**

Measurements 8.07 - 8.12 X 5.01 MM

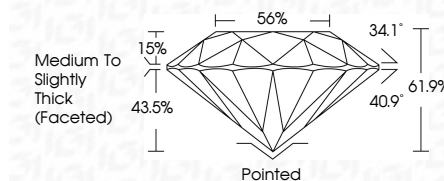
## GRADING RESULTS

Carat Weight **2.01 CARATS**

Color Grade

Clarity Grade WS 1

Cut Grade **IDEAL**



### ADDITIONAL GRADING INFORMATION

Polish **EXCELLENT**Symmetry **EXCELLENT**Fluorescence NONEInscription(s)  LG713522987

Comments: HEARTS & ARROWS

As Grown - No indication of post-growth treatment.

This Laboratory Grown Diamond was created by High Pressure High Temperature (HPHT) growth process.

Type II



© IGI 2020, International Gemological Institute

FD - 10 20



THIS DOCUMENT WAS PRODUCED WITH THE FOLLOWING SECURITY MEASURES: SPECIAL DOCUMENT PAPER, INK SCREENS, WATERMARK, BACKGROUND DESIGNS, HOLOGRAM AND OTHER SECURITY FEATURES NOT LISTED AND DO EXCEED DOCUMENT SECURITY INDUSTRY GUIDELINE

June 5, 2005	2.01 CARATS
GL Report No. LG713522987	
ROUND BRILLIANT	
10.07 - 10.12 X 6.01 MM	
Carat Weight	
Color Grade	D
Clarity Grade	VVS 1
Cut Grade	IDEAL
Depth	61.9%
Table	56%
Girdle	Medium to slightly Thick (centered)
Culet	Pointed
Polish	EXCELLENT
Symmetry	EXCELLENT
Fluorescence	NONE
Inscriptions(s)	lg91 LG713522987
Comments:	
-RWR & ARCW8	
-GIA - No indication of post-growth	
- This Laboratory Growth Diamond was created by High Pressure High Temperature (HPHT) growth process.	