



**ELECTRONIC COPY**

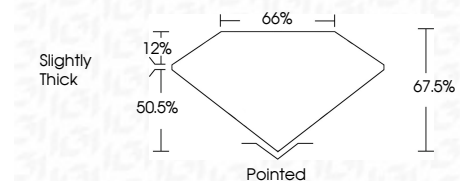
LG713514378  
Report verification at igi.org



June 4, 2025  
IGI Report Number **LG713514378**  
Description **LABORATORY GROWN DIAMOND**  
Shape and Cutting Style **CUT CORNERED  
RECTANGULAR MODIFIED  
BRILLIANT**  
Measurements **7.73 X 5.29 X 3.57 MM**

**GRADING RESULTS**

Carat Weight **1.26 CARAT**  
Color Grade **D**  
Clarity Grade **VS 1**

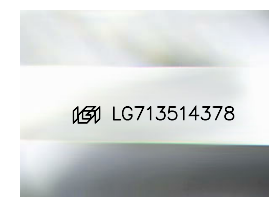


**ADDITIONAL GRADING INFORMATION**

Polish **EXCELLENT**  
Symmetry **EXCELLENT**  
Fluorescence **NONE**  
Inscription(s) **IGI LG713514378**  
Comments: This Laboratory Grown Diamond was created by Chemical Vapor Deposition (CVD) growth process. Type IIa

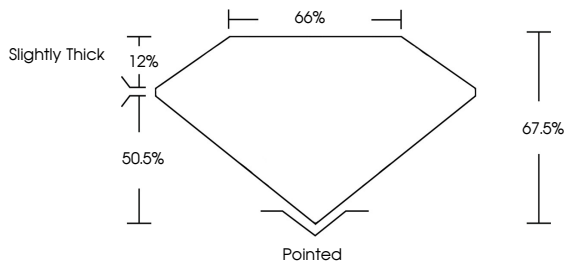


June 4, 2025  
IGI Report No LG713514378  
CUT CORNERED RECT. MODIFIED BRILLIANT  
1.26 CARAT  
D  
7.73 X 5.29 X 3.57 MM  
Color Grade  
D  
Clarity Grade  
VS 1  
Table  
67.5%  
Girdle  
65%  
Slightly Thick  
Culet  
Pointed  
Polish  
EXCELLENT  
Symmetry  
EXCELLENT  
Fluorescence  
NONE  
Inscription(s)  
IGI LG713514378  
Comments: This Laboratory Grown Diamond was created by Chemical Vapor Deposition (CVD) growth process. Type IIa

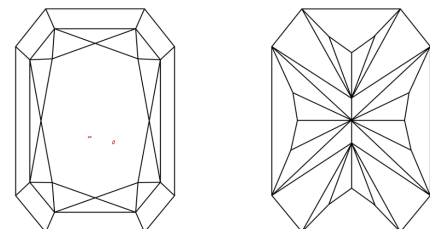


Sample Image Used

**PROPORTIONS**



**CLARITY CHARACTERISTICS**



**KEY TO SYMBOLS**

Red symbols indicate internal characteristics.  
Green symbols indicate external characteristics.

**COLOR**

D E F G H I J Faint Very Light Light

**CLARITY**

IF	VS <sup>1-2</sup>	VS <sup>1-2</sup>	SI <sup>1-2</sup>	I <sup>1-3</sup>
Internally Flawless	Very Very Slightly Included	Very Slightly Included	Slightly Included	Included

