



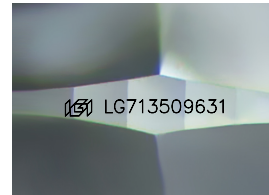
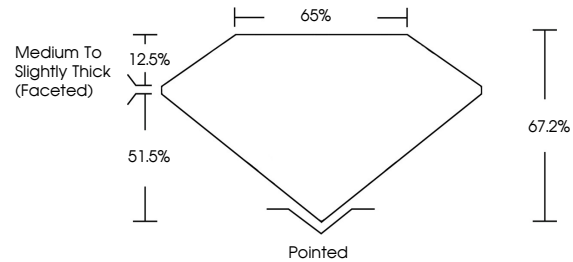
**INTERNATIONAL  
GEMOLOGICAL  
INSTITUTE**

**ELECTRONIC COPY**

## LABORATORY GROWN DIAMOND REPORT

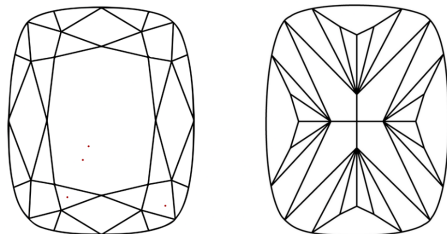
LG713509631  
Report verification at [igi.org](https://igi.org)

## PROPORTIONS



Sample Image Used

## CLARITY CHARACTERISTICS



## KEY TO SYMBOLS

Red symbols indicate internal characteristics.  
Green symbols indicate external characteristics.

## COLOR

D E F G H I J Faint Very Light Light

## CLARITY

IF                      WS<sup>1-2</sup>                      VS<sup>1-2</sup>                      SI<sup>1-2</sup>                      I<sup>1-3</sup>

Internally Flawless	Very Very Slightly Included	Very Slightly Included	Slightly Included	Included
------------------------	--------------------------------	---------------------------	----------------------	----------



© IGI 2020, International Gemological Institute

FD - 10 20

**www.igi.org**



THIS DOCUMENT WAS PRODUCED WITH THE FOLLOWING SECURITY MEASURES: SPECIAL DOCUMENT PAPER, INK SCREENS, WATERMARK BACKGROUND DESIGNS, HOLOGRAM AND OTHER SECURITY FEATURES NOT LISTED AND DO EXCEED DOCUMENT SECURITY INDUSTRY GUIDELINES.

LABORATORY GROWN DIAMOND REPORT



July 28, 2025

IGI Report Number **LG713509631**

Description	LABORATORY GROWN DIAMOND
-------------	--------------------------

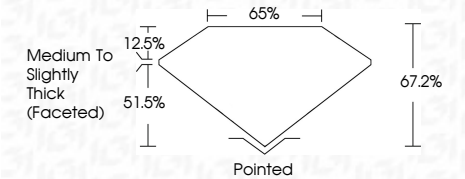
Shape and Cutting Style **CUSHION MODIFIED  
BRILLIANT**

Measurements 9.98 X 7.69 X 5.17 MM

## GRADING RESULTS

Carat Weight **3.05 CARATS**

Color Grade **G**

Clarity Grade **VVS 2**

### ADDITIONAL GRADING INFORMATION

Polish **EXCELLENT**Symmetry **EXCELLENT**Fluorescence **NONE**Inscription(s)  LG713509631

Comments: This Laboratory Grown Diamond was created by Chemical Vapor Deposition (CVD) growth process.  
Type IIa



IGI

July 28, 2025	GISH Report No. G5713509K631		CUSHION MODIFIED BRILLIANT	
9.98 X 7.69 X 6.17 MM	3.05 CARATS	G	Medium to Slightly Thick (Faceted)	
Carat Weight		VVS 2	Polished	Excellent
Color Grade		G/2	Symmetry	Excellent
Clarity Grade		60%	Fluorescence	None
Depth			Inscriptions	G/5713509K631
Table				
Girdle				
Culet				

Comments: The Laboratory Grown Diamond was created by Chemical Vapor Deposition (CVD) growth process.  
Type IIa