

**ELECTRONIC COPY**

## LABORATORY GROWN DIAMOND REPORT

June 3, 2025	
IGI Report Number	LG713503378
Description	LABORATORY GROWN DIAMOND
Shape and Cutting Style	ROUND BRILLIANT
Measurements	7.34 - 7.38 X 4.61 MM

## GRADING RESULTS

Carat Weight	1.54 CARAT
Color Grade	E
Clarity Grade	VS 1
Cut Grade	EXCELLENT

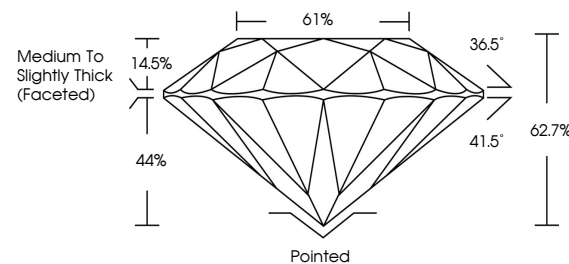
### ADDITIONAL GRADING INFORMATION

Polish	EXCELLENT
Symmetry	EXCELLENT
Fluorescence	NONE
Inscription(s)	 LG713503378

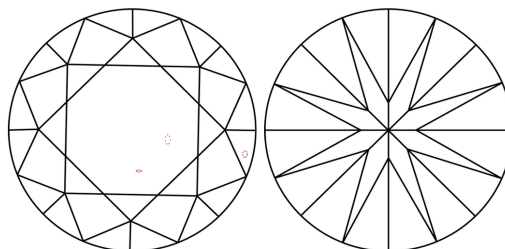
Comments: This Laboratory Grown Diamond was created by Chemical Vapor Deposition (CVD) growth process.  
Type IIa

LG713503378  
Report verification at [igi.org](https://igi.org)

## PROPORTIONS

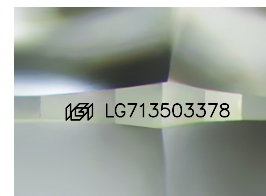


## CLARITY CHARACTERISTICS



## KEY TO SYMBOLS

Red symbols indicate internal characteristics.  
Green symbols indicate external characteristics.



Sample Image Used

## COLOR

D E F G H I J Faint Very Light Light

## CLARITY

IF WS<sup>1-2</sup> VS<sup>1-2</sup> SI<sup>1-2</sup> |<sup>1-3</sup>

Internally Flawless	Very Very Slightly Included	Very Slightly Included	Slightly Included	Included
------------------------	--------------------------------	---------------------------	----------------------	----------

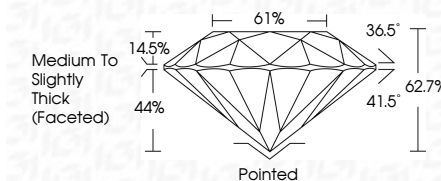
## LABORATORY GROWN DIAMOND REPORT



June 3, 2025	
IGI Report Number	LG713503378
Description	LABORATORY GROWN DIAMOND
Shape and Cutting Style	ROUND BRILLIANT
Measurements	7.34 - 7.38 X 4.61 MM

## GRADING RESULTS

Carat Weight	1.54 CARAT
Color Grade	E
Clarity Grade	VS 1
Cut Grade	EXCELLENT



### ADDITIONAL GRADING INFORMATION

Polish	EXCELLENT
Symmetry	EXCELLENT
Fluorescence	NONE
Inscription(s)	 LG713503378
Comments: This Laboratory Grown Diamond was created by Chemical Vapor Deposition (CVD) growth process.	
Type IIa	



© IGI 2020, International Gemological Institute

FD - 10 20

**www.igi.org**

THIS DOCUMENT WAS PRODUCED WITH THE FOLLOWING SECURITY MEASURES: SPECIAL DOCUMENT PAPER, INK SCREENS, WATERMARK BACKGROUND DESIGNS, HOLOGRAM AND OTHER SECURITY FEATURES NOT LISTED AND DO EXCEED DOCUMENT SECURITY INDUSTRY GUIDELINES

June 3, 2025	Color Weight	Corat Weight	Medium Thickness	499 Lb	<p>Comments:</p> <p>Material is Poly Grown Plastic          Manufactured by Chemical Vapor          Deposition (CVD) growth process.          Type IIC</p>
GI Record No. 63713503378	Color Grade	Color Grade			
ROUND BRILLANT	Clarity Grade	Clarity Grade			
	Cut Grade	Cut Grade			
	Depth	Depth			
	Table	Table			
	Grade	Grade			
	Culet	Culet			
	Polish	Polish			
	Symmetry	Symmetry			
	Fluorescence	Fluorescence			
	Inscriptions(s)	Inscriptions(s)			