



ELECTRONIC COPY

LG713501835
Report verification at igi.org



June 4, 2025
IGI Report Number LG713501835
Description LABORATORY GROWN DIAMOND
Shape and Cutting Style ROUND BRILLIANT
Measurements 7.15 - 7.20 X 4.54 MM
GRADING RESULTS
Carat Weight 1.46 CARAT
Color Grade E
Clarity Grade SI 1
Cut Grade EXCELLENT

June 4, 2025
IGI Report Number LG713501835
Description LABORATORY GROWN DIAMOND
Shape and Cutting Style ROUND BRILLIANT
Measurements 7.15 - 7.20 X 4.54 MM

GRADING RESULTS

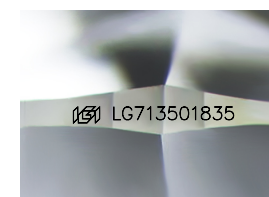
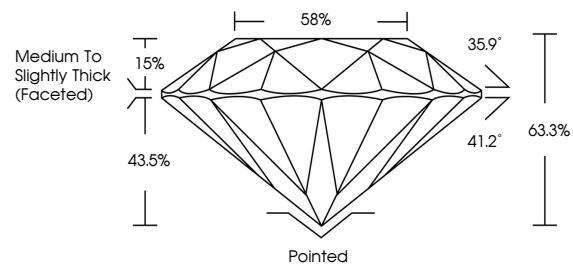
Carat Weight 1.46 CARAT
Color Grade E
Clarity Grade SI 1
Cut Grade EXCELLENT

ADDITIONAL GRADING INFORMATION

Polish EXCELLENT
Symmetry EXCELLENT
Fluorescence NONE
Inscription(s) IGI LG713501835

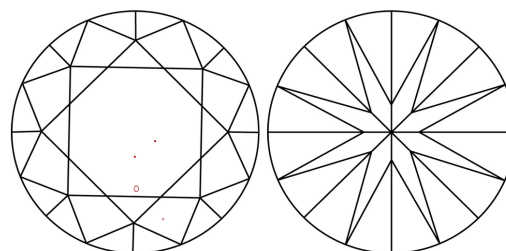
Comments: This Laboratory Grown Diamond was created by Chemical Vapor Deposition (CVD) growth process. Type IIa

PROPORTIONS



Sample Image Used

CLARITY CHARACTERISTICS



KEY TO SYMBOLS

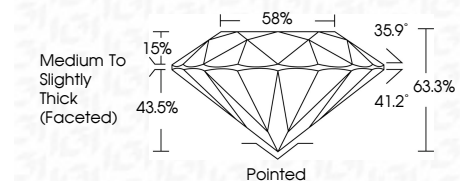
Red symbols indicate internal characteristics.
Green symbols indicate external characteristics.

COLOR

D E F G H I J Faint Very Light Light

CLARITY

IF WS 1-2 VS 1-2 SI 1-2 I 1-3
Internally Flawless Very Very Slightly Included Very Slightly Included Slightly Included Included



ADDITIONAL GRADING INFORMATION

Polish EXCELLENT
Symmetry EXCELLENT
Fluorescence NONE
Inscription(s) IGI LG713501835
Comments: This Laboratory Grown Diamond was created by Chemical Vapor Deposition (CVD) growth process. Type IIa



June 4, 2025
IGI Report No LG713501835
ROUND BRILLIANT
7.15 - 7.20 X 4.54 MM
1.46 CARAT
E
SI 1
EXCELLENT
63.3%
58%
Medium To Slightly Thick (Faceted)
Pointed
EXCELLENT
EXCELLENT
NONE
IGI LG713501835
Comments: This Laboratory Grown Diamond was created by Chemical Vapor Deposition (CVD) growth process. Type IIa